

Datasheet for ABIN7298650
anti-SLC6A17 antibody (Center)[Go to Product page](#)

1 Image

Overview

Quantity:	100 µL
Target:	SLC6A17
Binding Specificity:	Center
Reactivity:	Human, Mouse, Rat, Cow, Dog, Pig
Host:	Rabbit
Clonality:	Polyclonal
Conjugate:	This SLC6A17 antibody is un-conjugated
Application:	Western Blotting (WB)

Product Details

Immunogen:	KLH-conjugated synthetic peptide encompassing a sequence within the center region of human SLC6A17.
Specificity:	Recognizes endogenous levels of SLC6A17 protein.
Characteristics:	Rabbit polyclonal antibody to SLC6A17
Purification:	The antibody was purified by immunogen affinity chromatography.

Target Details

Target:	SLC6A17
Alternative Name:	SLC6A17 (SLC6A17 Products)
Background:	NTT4, Sodium-dependent neutral amino acid transporter SLC6A17, Sodium-dependent

Target Details

	neurotransmitter transporter NTT4, Solute carrier family 6 member 17
Gene ID:	388662, 229706, 613226
UniProt:	Q9H1V8 , Q8BJI1 , P31662

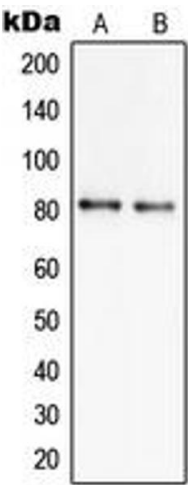
Application Details

Application Notes:	WB (1:500 - 1:1000)
Restrictions:	For Research Use only

Handling

Format:	Liquid
Buffer:	Liquid in 0.42 % Potassium phosphate, 0.87 % Sodium chloride, pH 7.3, 30 % glycerol, and 0.01 % sodium azide.
Preservative:	Sodium azide
Precaution of Use:	This product contains Sodium azide: a POISONOUS AND HAZARDOUS SUBSTANCE which should be handled by trained staff only.
Storage:	-20 °C
Storage Comment:	Shipped at 4°C. Upon delivery aliquot and store at -20°C for one year. Avoid freeze/thaw cycles.
Expiry Date:	12 months

Images



Western Blotting

Image 1. Western blot analysis of SLC6A17 expression in NCIH460 (A), U251MG (B) whole cell lysates.