

Datasheet for ABIN7298656
anti-FOXB2 antibody (Center)



[Go to Product page](#)

1 Image

Overview

Quantity:	100 µL
Target:	FOXB2
Binding Specificity:	Center
Reactivity:	Human, Mouse
Host:	Rabbit
Clonality:	Polyclonal
Conjugate:	This FOXB2 antibody is un-conjugated
Application:	Western Blotting (WB), Immunoprecipitation (IP)

Product Details

Immunogen:	KLH-conjugated synthetic peptide encompassing a sequence within the center region of human FOXB2.
Specificity:	Recognizes endogenous levels of FOXB2 protein.
Characteristics:	Rabbit polyclonal antibody to FOXB2
Purification:	The antibody was purified by immunogen affinity chromatography.

Target Details

Target:	FOXB2
Alternative Name:	FOXB2 (FOXB2 Products)
Background:	Forkhead box protein B2

Target Details

Gene ID:	442425, 14240
UniProt:	Q5VYV0 , Q64733

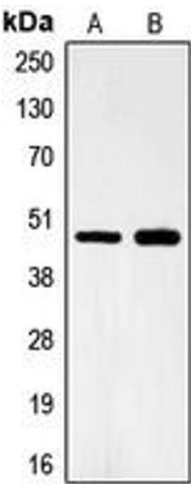
Application Details

Application Notes:	WB (1:500 - 1:1000), IP (1:10 - 1:100)
Restrictions:	For Research Use only

Handling

Format:	Liquid
Buffer:	Liquid in 0.42 % Potassium phosphate, 0.87 % Sodium chloride, pH 7.3, 30 % glycerol, and 0.01 % sodium azide.
Preservative:	Sodium azide
Precaution of Use:	This product contains Sodium azide: a POISONOUS AND HAZARDOUS SUBSTANCE which should be handled by trained staff only.
Storage:	-20 °C
Storage Comment:	Shipped at 4°C. Upon delivery aliquot and store at -20°C for one year. Avoid freeze/thaw cycles.
Expiry Date:	12 months

Images



Western Blotting

Image 1. Western blot analysis of FOXB2 expression in Lovo (A), HeLa (B) whole cell lysates.