



Datasheet for ABIN7298662  
**anti-SFTP A2 antibody (Center)**



[Go to Product page](#)

1 Image

Overview

Quantity:	100 µL
Target:	SFTP A2
Binding Specificity:	Center
Reactivity:	Human, Mouse
Host:	Rabbit
Clonality:	Polyclonal
Conjugate:	This SFTP A2 antibody is un-conjugated
Application:	Western Blotting (WB)

Product Details

Immunogen:	KLH-conjugated synthetic peptide encompassing a sequence within the center region of human SFTP A2.
Specificity:	Recognizes endogenous levels of SFTP A2 protein.
Characteristics:	Rabbit polyclonal antibody to SFTP A2
Purification:	The antibody was purified by immunogen affinity chromatography.

Target Details

Target:	SFTP A2
Alternative Name:	SFTP A2 ( <a href="#">SFTP A2 Products</a> )
Background:	SFTP A2, COLEC5, PSAP, SFTP1, SFTP A, SFTP A2B, Pulmonary surfactant-associated protein

## Target Details

---

A2, PSP-A, PSPA, SP-A, SP-A2, 35 kDa pulmonary surfactant-associated protein, Alveolar proteinosis protein, Collectin-5, SFTPA1, COLEC4, PSAP, SFTP1, SFTPA, SFTPA1B, Pulmonary surfactant-associated protein A1, PSP-A, PSPA, SP-A, SP-A1, 35 kDa pulmonary surfactant-associated protein, Alveolar proteinosis protein, Collectin-4

Gene ID: 729238, 653509

UniProt: [Q8IWL1](#), [Q8IWL2](#), [P35242](#)

## Application Details

---

Application Notes: WB (1:500 - 1:1000)

Restrictions: For Research Use only

## Handling

---

Format: Liquid

Buffer: Liquid in 0.42 % Potassium phosphate, 0.87 % Sodium chloride, pH 7.3, 30 % glycerol, and 0.01 % sodium azide.

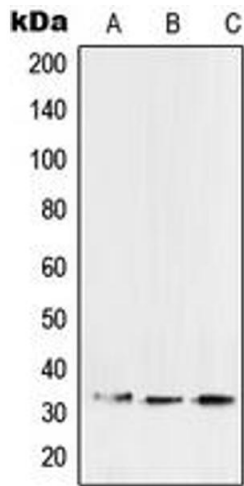
Preservative: Sodium azide

Precaution of Use: This product contains Sodium azide: a POISONOUS AND HAZARDOUS SUBSTANCE which should be handled by trained staff only.

Storage: -20 °C

Storage Comment: Shipped at 4°C. Upon delivery aliquot and store at -20°C for one year. Avoid freeze/thaw cycles.

Expiry Date: 12 months



### Western Blotting

**Image 1.** Western blot analysis of SFTPA2 expression in A549 (A), HCT15 (B), mouse lung (C) whole cell lysates.