



[Go to Product page](#)

Datasheet for ABIN7298678
anti-FXYD2 antibody (C-Term)

1 Image

Overview

Quantity:	100 µL
Target:	FXYD2
Binding Specificity:	C-Term
Reactivity:	Human, Mouse, Rat
Host:	Rabbit
Clonality:	Polyclonal
Conjugate:	This FXYD2 antibody is un-conjugated
Application:	Western Blotting (WB)

Product Details

Immunogen:	KLH-conjugated synthetic peptide encompassing a sequence within the C-term region of human FXYD2.
Specificity:	Recognizes endogenous levels of FXYD2 protein.
Characteristics:	Rabbit polyclonal antibody to FXYD2
Purification:	The antibody was purified by immunogen affinity chromatography.

Target Details

Target:	FXYD2
Alternative Name:	FXYD2 (FXYD2 Products)
Background:	ATP1C, ATP1G1, Sodium/potassium-transporting ATPase subunit gamma, Na(+)/K(+) ATPase

Target Details

subunit gamma, FXYP domain-containing ion transport regulator 2, Sodium pump gamma chain

Gene ID: 486, 11936, 29639

UniProt: [P54710](#), [Q04646](#), [Q04679](#)

Pathways: [Thyroid Hormone Synthesis](#)

Application Details

Application Notes: WB (1:500 - 1:1000)

Restrictions: For Research Use only

Handling

Format: Liquid

Buffer: Liquid in 0.42 % Potassium phosphate, 0.87 % Sodium chloride, pH 7.3, 30 % glycerol, and 0.01 % sodium azide.

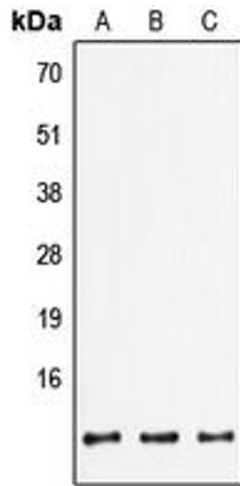
Preservative: Sodium azide

Precaution of Use: This product contains Sodium azide: a POISONOUS AND HAZARDOUS SUBSTANCE which should be handled by trained staff only.

Storage: -20 °C

Storage Comment: Shipped at 4°C. Upon delivery aliquot and store at -20°C for one year. Avoid freeze/thaw cycles.

Expiry Date: 12 months



Western Blotting

Image 1. Western blot analysis of FXYD2 expression in HepG2 (A), mouse lung (B), rat brain (C) whole cell lysates.