

Datasheet for ABIN7298710  
**anti-CLCN1 antibody (N-Term)**[Go to Product page](#)

## 1 Image

## Overview

Quantity:	100 µL
Target:	CLCN1
Binding Specificity:	N-Term
Reactivity:	Human, Mouse, Rat
Host:	Rabbit
Clonality:	Polyclonal
Conjugate:	This CLCN1 antibody is un-conjugated
Application:	Western Blotting (WB)

## Product Details

Immunogen:	KLH-conjugated synthetic peptide encompassing a sequence within the N-term region of human CLCN1.
Specificity:	Recognizes endogenous levels of CLCN1 protein.
Characteristics:	Rabbit polyclonal antibody to CLCN1
Purification:	The antibody was purified by immunogen affinity chromatography.

## Target Details

Target:	CLCN1
Alternative Name:	CLCN1 ( <a href="#">CLCN1 Products</a> )
Background:	CLC1, Chloride channel protein 1, CIC-1, Chloride channel protein, skeletal muscle

Target Details

Gene ID:	1180, 12723, 25688
UniProt:	<a href="#">P35523</a> , <a href="#">Q64347</a> , <a href="#">P35524</a>

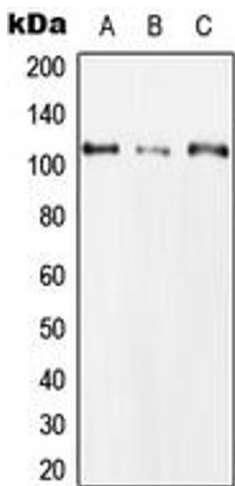
Application Details

Application Notes:	WB (1:500 - 1:1000)
Restrictions:	For Research Use only

Handling

Format:	Liquid
Buffer:	Liquid in 0.42 % Potassium phosphate, 0.87 % Sodium chloride, pH 7.3, 30 % glycerol, and 0.01 % sodium azide.
Preservative:	Sodium azide
Precaution of Use:	This product contains Sodium azide: a POISONOUS AND HAZARDOUS SUBSTANCE which should be handled by trained staff only.
Storage:	-20 °C
Storage Comment:	Shipped at 4°C. Upon delivery aliquot and store at -20°C for one year. Avoid freeze/thaw cycles.
Expiry Date:	12 months

Images



Western Blotting

**Image 1.** Western blot analysis of CLCN1 expression in Hela (A), NIH3T3 (B), H9C2 (C) whole cell lysates.