



Datasheet for ABIN7298778

## anti-Mitochondrially Encoded ATP Synthase 8 (MT-ATP8) (Center) antibody



[Go to Product page](#)

### 1 Image

#### Overview

Quantity:	100 µL
Target:	Mitochondrially Encoded ATP Synthase 8 (MT-ATP8)
Binding Specificity:	Center
Reactivity:	Human, Mouse, Rat
Host:	Rabbit
Clonality:	Polyclonal
Conjugate:	Un-conjugated
Application:	Western Blotting (WB)

#### Product Details

Immunogen:	KLH-conjugated synthetic peptide encompassing a sequence within the center region of human ATP8.
Specificity:	Recognizes endogenous levels of ATP8 protein.
Characteristics:	Rabbit polyclonal antibody to ATP8
Purification:	The antibody was purified by immunogen affinity chromatography.

#### Target Details

Target:	Mitochondrially Encoded ATP Synthase 8 (MT-ATP8)
Alternative Name:	ATP8 ( <a href="#">MT-ATP8 Products</a> )
Background:	ATP8, ATPASE8, MTATP8, ATP synthase protein 8, A6L, F-ATPase subunit 8

## Target Details

Gene ID:	4509, 17706
UniProt:	<a href="#">P03928</a> , <a href="#">P03930</a> , <a href="#">P11608</a>
Pathways:	<a href="#">Proton Transport</a> , <a href="#">Ribonucleoside Biosynthetic Process</a>

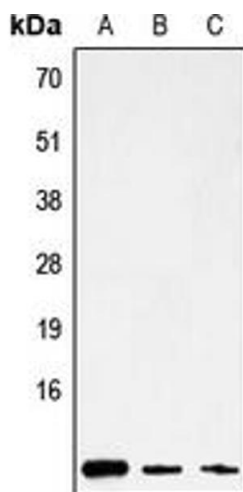
## Application Details

Application Notes:	WB (1:500 - 1:1000)
Restrictions:	For Research Use only

## Handling

Format:	Liquid
Buffer:	Liquid in 0.42 % Potassium phosphate, 0.87 % Sodium chloride, pH 7.3, 30 % glycerol, and 0.01 % sodium azide.
Preservative:	Sodium azide
Precaution of Use:	This product contains Sodium azide: a POISONOUS AND HAZARDOUS SUBSTANCE which should be handled by trained staff only.
Storage:	-20 °C
Storage Comment:	Shipped at 4°C. Upon delivery aliquot and store at -20°C for one year. Avoid freeze/thaw cycles.
Expiry Date:	12 months

## Images



### Western Blotting

**Image 1.** Western blot analysis of ATP8 expression in HepG2 (A), mouse brain (B), rat stomach (C) whole cell lysates.