



[Go to Product page](#)

Datasheet for ABIN7298780

anti-NUDT1 antibody (N-Term)

1 Image

Overview

Quantity:	100 µL
Target:	NUDT1
Binding Specificity:	N-Term
Reactivity:	Human, Mouse, Rat
Host:	Rabbit
Clonality:	Polyclonal
Conjugate:	This NUDT1 antibody is un-conjugated
Application:	Western Blotting (WB)

Product Details

Immunogen:	KLH-conjugated synthetic peptide encompassing a sequence within the N-term region of human MTH1.
Specificity:	Recognizes endogenous levels of MTH1 protein.
Characteristics:	Rabbit polyclonal antibody to MTH1
Purification:	The antibody was purified by immunogen affinity chromatography.

Target Details

Target:	NUDT1
Alternative Name:	MTH1 (NUDT1 Products)
Background:	MTH1, 7,8-dihydro-8-oxoguanine triphosphatase, 2-hydroxy-dATP diphosphatase, 8-oxo-

Target Details

dGTPase, Nucleoside diphosphate-linked moiety X motif 1, Nudix motif 1

Gene ID: 4521, 17766, 117260

UniProt: [P36639](#), [P53368](#), [P53369](#)

Application Details

Application Notes: WB (1:500 - 1:1000)

Restrictions: For Research Use only

Handling

Format: Liquid

Buffer: Liquid in 0.42 % Potassium phosphate, 0.87 % Sodium chloride, pH 7.3, 30 % glycerol, and 0.01 % sodium azide.

Preservative: Sodium azide

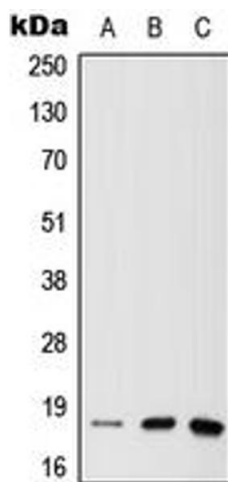
Precaution of Use: This product contains Sodium azide: a POISONOUS AND HAZARDOUS SUBSTANCE which should be handled by trained staff only.

Storage: -20 °C

Storage Comment: Shipped at 4°C. Upon delivery aliquot and store at -20°C for one year. Avoid freeze/thaw cycles.

Expiry Date: 12 months

Images



Western Blotting

Image 1. Western blot analysis of MTH1 expression in A549 (A), mouse liver (B), rat brain (C) whole cell lysates.