

Datasheet for ABIN7298810  
**anti-PLSCR1 antibody (Center)**[Go to Product page](#)

## 1 Image

## Overview

Quantity:	100 µL
Target:	PLSCR1
Binding Specificity:	Center
Reactivity:	Human, Rat, Mouse, Dog, Rabbit, Cow, Pig, Sheep
Host:	Rabbit
Clonality:	Polyclonal
Conjugate:	This PLSCR1 antibody is un-conjugated
Application:	Western Blotting (WB)

## Product Details

Immunogen:	KLH-conjugated synthetic peptide encompassing a sequence within the center region of human PLSCR1.
Specificity:	Recognizes endogenous levels of PLSCR1 protein.
Characteristics:	Rabbit polyclonal antibody to PLSCR1
Purification:	The antibody was purified by immunogen affinity chromatography.

## Target Details

Target:	PLSCR1
Alternative Name:	PLSCR1 ( <a href="#">PLSCR1 Products</a> )
Background:	Phospholipid scramblase 1, PL scramblase 1, Ca(2+)-dependent phospholipid scramblase 1,

Target Details

	Erythrocyte phospholipid scramblase, MmTRA1b
Gene ID:	5359, 22038, 117540
UniProt:	<a href="#">O15162</a> , <a href="#">Q9JJ00</a> , <a href="#">P58195</a>
Pathways:	<a href="#">Cellular Response to Molecule of Bacterial Origin</a>

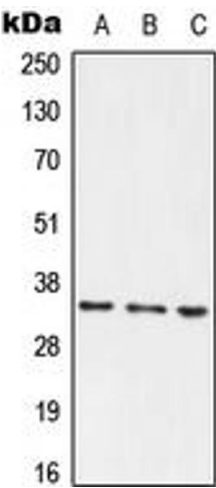
Application Details

Application Notes:	WB (1:500 - 1:1000)
Restrictions:	For Research Use only

Handling

Format:	Liquid
Buffer:	Liquid in 0.42 % Potassium phosphate, 0.87 % Sodium chloride, pH 7.3, 30 % glycerol, and 0.01 % sodium azide.
Preservative:	Sodium azide
Precaution of Use:	This product contains Sodium azide: a POISONOUS AND HAZARDOUS SUBSTANCE which should be handled by trained staff only.
Storage:	-20 °C
Storage Comment:	Shipped at 4°C. Upon delivery aliquot and store at -20°C for one year. Avoid freeze/thaw cycles.
Expiry Date:	12 months

Images



Western Blotting

**Image 1.** Western blot analysis of PLSCR1 expression in HEK293T (A), Raw264.7 (B), PC12 (C) whole cell lysates.