



[Go to Product page](#)

Datasheet for ABIN7298814  
**anti-POLR2K antibody (Center)**

1 Image

Overview

Quantity:	100 µL
Target:	POLR2K
Binding Specificity:	Center
Reactivity:	Human, Mouse, Rat, Cow, Monkey
Host:	Rabbit
Clonality:	Polyclonal
Conjugate:	This POLR2K antibody is un-conjugated
Application:	Western Blotting (WB)

Product Details

Immunogen:	KLH-conjugated synthetic peptide encompassing a sequence within the center region of human POLR2K.
Specificity:	Recognizes endogenous levels of POLR2K protein.
Characteristics:	Rabbit polyclonal antibody to POLR2K
Purification:	The antibody was purified by immunogen affinity chromatography.

Target Details

Target:	POLR2K
Alternative Name:	POLR2K ( <a href="#">POLR2K Products</a> )
Background:	DNA-directed RNA polymerases I, II, and III subunit RPABC4, RNA polymerases I, II, and III

## Target Details

---

subunit ABC4, ABC10-alpha, DNA-directed RNA polymerase II subunit K, RNA polymerase II 7.0 kDa subunit, RPB7.0, RPB10alpha

Gene ID: 5440, 17749

UniProt: [P53803](#), [Q63871](#)

Pathways: [Regulatory RNA Pathways](#)

## Application Details

---

Application Notes: WB (1:500 - 1:1000)

Restrictions: For Research Use only

## Handling

---

Format: Liquid

Buffer: Liquid in 0.42 % Potassium phosphate, 0.87 % Sodium chloride, pH 7.3, 30 % glycerol, and 0.01 % sodium azide.

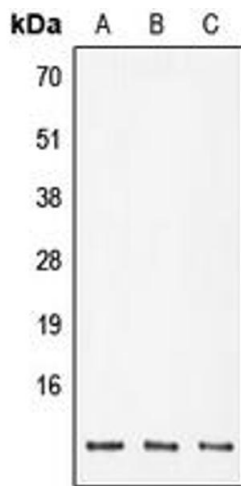
Preservative: Sodium azide

Precaution of Use: This product contains Sodium azide: a POISONOUS AND HAZARDOUS SUBSTANCE which should be handled by trained staff only.

Storage: -20 °C

Storage Comment: Shipped at 4°C. Upon delivery aliquot and store at -20°C for one year. Avoid freeze/thaw cycles.

Expiry Date: 12 months



### Western Blotting

**Image 1.** Western blot analysis of POLR2K expression in DLD (A), SP2/0 (B), PC12 (C) whole cell lysates.