

Datasheet for ABIN7298826
anti-RGS4 antibody (Center)



[Go to Product page](#)

1 Image

Overview

Quantity:	100 µL
Target:	RGS4
Binding Specificity:	Center
Reactivity:	Human, Mouse, Rat, Cow, Rabbit, Sheep
Host:	Rabbit
Clonality:	Polyclonal
Conjugate:	This RGS4 antibody is un-conjugated
Application:	Western Blotting (WB)

Product Details

Immunogen:	KLH-conjugated synthetic peptide encompassing a sequence within the center region of human RGS4.
Specificity:	Recognizes endogenous levels of RGS4 protein.
Characteristics:	Rabbit polyclonal antibody to RGS4
Purification:	The antibody was purified by immunogen affinity chromatography.

Target Details

Target:	RGS4
Alternative Name:	RGS4 (RGS4 Products)
Background:	Regulator of G-protein signaling 4, RGP4, RGS4

Target Details

Gene ID:	5999, 19736, 29480
UniProt:	P49798 , O08899 , P49799
Pathways:	Myometrial Relaxation and Contraction , Regulation of G-Protein Coupled Receptor Protein Signaling

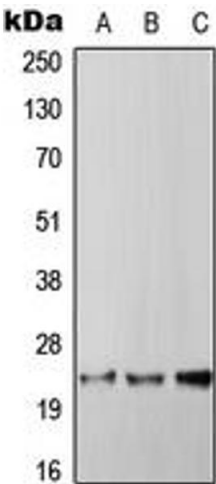
Application Details

Application Notes:	WB (1:500 - 1:1000)
Restrictions:	For Research Use only

Handling

Format:	Liquid
Buffer:	Liquid in 0.42 % Potassium phosphate, 0.87 % Sodium chloride, pH 7.3, 30 % glycerol, and 0.01 % sodium azide.
Preservative:	Sodium azide
Precaution of Use:	This product contains Sodium azide: a POISONOUS AND HAZARDOUS SUBSTANCE which should be handled by trained staff only.
Storage:	-20 °C
Storage Comment:	Shipped at 4°C. Upon delivery aliquot and store at -20°C for one year. Avoid freeze/thaw cycles.
Expiry Date:	12 months

Images



Western Blotting

Image 1. Western blot analysis of RGS4 expression in HepG2 (A), SP2/0 (B), PC12 (C) whole cell lysates.