



[Go to Product page](#)

Datasheet for ABIN7298842
anti-SLC9A5 antibody (Center)

1 Image

Overview

Quantity:	100 µL
Target:	SLC9A5
Binding Specificity:	Center
Reactivity:	Human, Mouse, Rat, Cow, Dog, Pig, Monkey
Host:	Rabbit
Clonality:	Polyclonal
Conjugate:	This SLC9A5 antibody is un-conjugated
Application:	Western Blotting (WB)

Product Details

Immunogen:	KLH-conjugated synthetic peptide encompassing a sequence within the center region of human NHE5.
Specificity:	Recognizes endogenous levels of NHE5 protein.
Characteristics:	Rabbit polyclonal antibody to NHE5
Purification:	The antibody was purified by immunogen affinity chromatography.

Target Details

Target:	SLC9A5
Alternative Name:	NHE5 (SLC9A5 Products)
Background:	NHE5, Sodium/hydrogen exchanger 5, Na(+)/H(+) exchanger 5, NHE-5, Solute carrier family 9

Target Details

	member 5
Gene ID:	6553, 192215
UniProt:	Q14940 , Q9Z0X2
Pathways:	Proton Transport

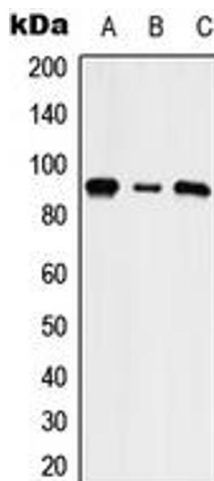
Application Details

Application Notes:	WB (1:500 - 1:1000)
Restrictions:	For Research Use only

Handling

Format:	Liquid
Buffer:	Liquid in 0.42 % Potassium phosphate, 0.87 % Sodium chloride, pH 7.3, 30 % glycerol, and 0.01 % sodium azide.
Preservative:	Sodium azide
Precaution of Use:	This product contains Sodium azide: a POISONOUS AND HAZARDOUS SUBSTANCE which should be handled by trained staff only.
Storage:	-20 °C
Storage Comment:	Shipped at 4°C. Upon delivery aliquot and store at -20°C for one year. Avoid freeze/thaw cycles.
Expiry Date:	12 months

Images



Western Blotting

Image 1. Western blot analysis of NHE5 expression in HepG2 (A), NIH3T3 (B), rat brain (C) whole cell lysates.