

Datasheet for ABIN7298870  
**anti-RGS20 antibody (Center)**[Go to Product page](#)

## 1 Image

## Overview

Quantity:	100 µL
Target:	RGS20
Binding Specificity:	Center
Reactivity:	Human, Mouse, Rat, Monkey
Host:	Rabbit
Clonality:	Polyclonal
Conjugate:	This RGS20 antibody is un-conjugated
Application:	Western Blotting (WB)

## Product Details

Immunogen:	KLH-conjugated synthetic peptide encompassing a sequence within the center region of human RGS20.
Specificity:	Recognizes endogenous levels of RGS20 protein.
Characteristics:	Rabbit polyclonal antibody to RGS20
Purification:	The antibody was purified by immunogen affinity chromatography.

## Target Details

Target:	RGS20
Alternative Name:	RGS20 ( <a href="#">RGS20 Products</a> )
Background:	RGSZ1, ZGAP1, Regulator of G-protein signaling 20, RGS20, Gz-selective GTPase-activating

### Target Details

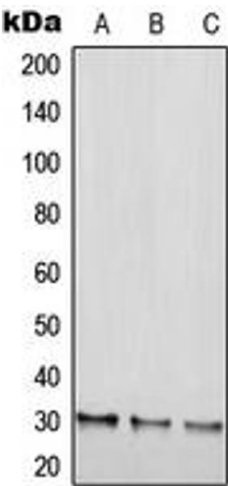
	protein, G(z)GAP, Gz-GAP, Regulator of G-protein signaling Z1, Regulator of Gz-selective protein signaling 1
Gene ID:	8601, 58175
UniProt:	<a href="#">O76081</a> , <a href="#">Q9QZB1</a>
Pathways:	<a href="#">Myometrial Relaxation and Contraction</a> , <a href="#">Regulation of G-Protein Coupled Receptor Protein Signaling</a>

### Application Details

Application Notes:	WB (1:500 - 1:1000)
Restrictions:	For Research Use only

### Handling

Format:	Liquid
Buffer:	Liquid in 0.42 % Potassium phosphate, 0.87 % Sodium chloride, pH 7.3, 30 % glycerol, and 0.01 % sodium azide.
Preservative:	Sodium azide
Precaution of Use:	This product contains Sodium azide: a POISONOUS AND HAZARDOUS SUBSTANCE which should be handled by trained staff only.
Storage:	-20 °C
Storage Comment:	Shipped at 4°C. Upon delivery aliquot and store at -20°C for one year. Avoid freeze/thaw cycles.
Expiry Date:	12 months



Western Blotting

**Image 1.** Western blot analysis of RGS20 expression in HEK293T (A), NIH3T3 (B), H9C2 (C) whole cell lysates.