



[Go to Product page](#)

Datasheet for ABIN7298886  
**anti-RAB36 antibody (Center)**

1 Image

Overview

|                      |                                      |
|----------------------|--------------------------------------|
| Quantity:            | 100 µL                               |
| Target:              | RAB36                                |
| Binding Specificity: | Center                               |
| Reactivity:          | Human, Mouse, Rat                    |
| Host:                | Rabbit                               |
| Clonality:           | Polyclonal                           |
| Conjugate:           | This RAB36 antibody is un-conjugated |
| Application:         | Western Blotting (WB)                |

Product Details

|                  |   |
|------------------|---|
| Immunogen:       | KLH-conjugated synthetic peptide encompassing a sequence within the center region of human RAB36. |
| Specificity:     | Recognizes endogenous levels of RAB36 protein.  |
| Characteristics: | Rabbit polyclonal antibody to RAB36   |
| Purification:    | The antibody was purified by immunogen affinity chromatography.                                   |

Target Details

|                   |  |
|-------------------|--|
| Target:           | RAB36                                    |
| Alternative Name: | RAB36 ( <a href="#">RAB36 Products</a> ) |
| Background:       | Ras-related protein Rab-36               |

## Target Details

Gene ID: 9609, 76877

UniProt: [O95755, Q8CAM5](#)

## Application Details

Application Notes: WB (1:500 - 1:1000)

Restrictions: For Research Use only

## Handling

Format: Liquid

Buffer: Liquid in 0.42 % Potassium phosphate, 0.87 % Sodium chloride, pH 7.3, 30 % glycerol, and 0.01 % sodium azide.

Preservative: Sodium azide

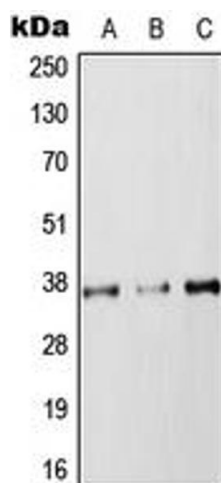
Precaution of Use: This product contains Sodium azide: a POISONOUS AND HAZARDOUS SUBSTANCE which should be handled by trained staff only.

Storage: -20 °C

Storage Comment: Shipped at 4°C. Upon delivery aliquot and store at -20°C for one year. Avoid freeze/thaw cycles.

Expiry Date: 12 months

## Images



### Western Blotting

**Image 1.** Western blot analysis of RAB36 expression in HEK293T (A), NIH3T3 (B), PC12 (C) whole cell lysates.