



Datasheet for ABIN7298900

anti-SEC61B antibody (Center)



[Go to Product page](#)

1 Image

1 Publication

Overview

Quantity:	100 µL
Target:	SEC61B
Binding Specificity:	Center
Reactivity:	Human, Mouse, Rat, Cow, Dog
Host:	Rabbit
Clonality:	Polyclonal
Conjugate:	This SEC61B antibody is un-conjugated
Application:	Western Blotting (WB)

Product Details

Immunogen:	KLH-conjugated synthetic peptide encompassing a sequence within the center region of human SEC61B.
Specificity:	Recognizes endogenous levels of SEC61B protein.
Characteristics:	Rabbit polyclonal antibody to SEC61B
Purification:	The antibody was purified by immunogen affinity chromatography.

Target Details

Target:	SEC61B
Alternative Name:	SEC61B (SEC61B Products)
Background:	Protein transport protein Sec61 subunit beta

Target Details

Gene ID:	10952, 66212
UniProt:	P60468 , Q9CQS8
Pathways:	Protein targeting to Nucleus

Application Details

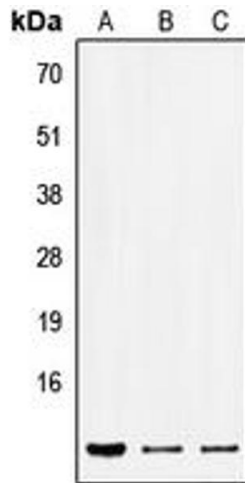
Application Notes:	WB (1:500 - 1:1000)
Restrictions:	For Research Use only

Handling

Format:	Liquid
Buffer:	Liquid in 0.42 % Potassium phosphate, 0.87 % Sodium chloride, pH 7.3, 30 % glycerol, and 0.01 % sodium azide.
Preservative:	Sodium azide
Precaution of Use:	This product contains Sodium azide: a POISONOUS AND HAZARDOUS SUBSTANCE which should be handled by trained staff only.
Storage:	-20 °C
Storage Comment:	Shipped at 4°C. Upon delivery aliquot and store at -20°C for one year. Avoid freeze/thaw cycles.
Expiry Date:	12 months

Publications

Product cited in:	Bolar, Golzio, Živná, Hayot, Van Hemelrijk, Schepers, Vandeweyer, Hoischen, Huyghe, Raes, Matthys, Sys, Azou, Gubler, Praet, Van Camp, McFadden, Pediaditakis, Přistoupilová, Hodaňová, Vyleťal et al.: "Heterozygous Loss-of-Function SEC61A1 Mutations Cause Autosomal-Dominant Tubulo-Interstitial and Glomerulocystic Kidney Disease with Anemia. ..." in: American journal of human genetics , Vol. 99, Issue 1, pp. 174-87, (2017) (PubMed).
-------------------	---



Western Blotting

Image 1. Western blot analysis of SEC61B expression in HEK293T (A), Raw264.7 (B), H9C2 (C) whole cell lysates.