



[Go to Product page](#)

Datasheet for ABIN7298924  
**anti-RGS17 antibody (Center)**

1 Image

### Overview

|                      |                                      |
|----------------------|--------------------------------------|
| Quantity:            | 100 µL                               |
| Target:              | RGS17                                |
| Binding Specificity: | Center                               |
| Reactivity:          | Human, Mouse, Rat, Cow, Monkey       |
| Host:                | Rabbit                               |
| Clonality:           | Polyclonal                           |
| Conjugate:           | This RGS17 antibody is un-conjugated |
| Application:         | Western Blotting (WB)                |

### Product Details

|                  |   |
|------------------|---|
| Immunogen:       | KLH-conjugated synthetic peptide encompassing a sequence within the center region of human RGS17. |
| Specificity:     | Recognizes endogenous levels of RGS17 protein.  |
| Characteristics: | Rabbit polyclonal antibody to RGS17   |
| Purification:    | The antibody was purified by immunogen affinity chromatography.                                   |

### Target Details

|                   |  |
|-------------------|--|
| Target:           | RGS17                                      |
| Alternative Name: | RGS17 ( <a href="#">RGS17 Products</a> )   |
| Background:       | Regulator of G-protein signaling 17, RGS17 |

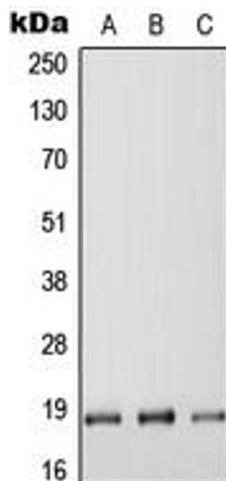
## Target Details

|           |   |
|-----------|---|
| Gene ID:  | 26575, 56533  |
| UniProt:  | <a href="#">Q9UGC6, Q9QZB0</a>  |
| Pathways: | <a href="#">Myometrial Relaxation and Contraction, Regulation of G-Protein Coupled Receptor Protein Signaling</a> |

## Application Details

|                    |  |
|--------------------|--|
| Application Notes: | WB (1:500 - 1:1000)  |
| Restrictions:      | For Research Use only  |
| Handling           |  |
| Format:            | Liquid   |
| Buffer:            | Liquid in 0.42 % Potassium phosphate, 0.87 % Sodium chloride, pH 7.3, 30 % glycerol, and 0.01 % sodium azide.          |
| Preservative:      | Sodium azide   |
| Precaution of Use: | This product contains Sodium azide: a POISONOUS AND HAZARDOUS SUBSTANCE which should be handled by trained staff only. |
| Storage:           | -20 °C   |
| Storage Comment:   | Shipped at 4°C. Upon delivery aliquot and store at -20°C for one year. Avoid freeze/thaw cycles.                       |
| Expiry Date:       | 12 months  |

## Images



### Western Blotting

**Image 1.** Western blot analysis of RGS17 expression in HEK293T (A), Raw264.7 (B), H9C2 (C) whole cell lysates.