



[Go to Product page](#)

Datasheet for ABIN7298930
anti-SERP1 antibody (N-Term)

1 Image

Overview

Quantity:	100 µL
Target:	SERP1
Binding Specificity:	N-Term
Reactivity:	Human, Mouse, Rat, Cow
Host:	Rabbit
Clonality:	Polyclonal
Conjugate:	This SERP1 antibody is un-conjugated
Application:	Western Blotting (WB)

Product Details

Immunogen:	KLH-conjugated synthetic peptide encompassing a sequence within the N-term region of human SERP1.
Specificity:	Recognizes endogenous levels of SERP1 protein.
Characteristics:	Rabbit polyclonal antibody to SERP1
Purification:	The antibody was purified by immunogen affinity chromatography.

Target Details

Target:	SERP1
Alternative Name:	SERP1 (SERP1 Products)
Background:	RAMP4, Stress-associated endoplasmic reticulum protein 1, Ribosome-attached membrane

Target Details

protein 4

Gene ID: 27230, 28146, 80881

UniProt: [Q9Y6X1](#), [Q9Z1W5](#), [Q9R2C1](#)

Application Details

Application Notes: WB (1:500 - 1:1000)

Restrictions: For Research Use only

Handling

Format: Liquid

Buffer: Liquid in 0.42 % Potassium phosphate, 0.87 % Sodium chloride, pH 7.3, 30 % glycerol, and 0.01 % sodium azide.

Preservative: Sodium azide

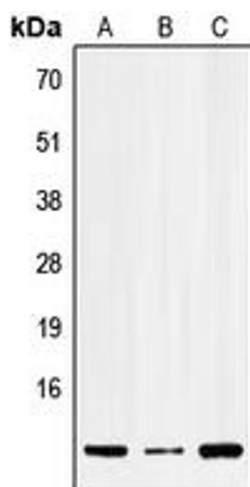
Precaution of Use: This product contains Sodium azide: a POISONOUS AND HAZARDOUS SUBSTANCE which should be handled by trained staff only.

Storage: -20 °C

Storage Comment: Shipped at 4°C. Upon delivery aliquot and store at -20°C for one year. Avoid freeze/thaw cycles.

Expiry Date: 12 months

Images



Western Blotting

Image 1. Western blot analysis of SERP1 expression in HEK293T (A), Raw264.7 (B), PC12 (C) whole cell lysates.