

Datasheet for ABIN7298966
anti-MKL2 antibody (Center)



[Go to Product page](#)

1 Image

Overview

Quantity:	100 µL
Target:	MKL2
Binding Specificity:	Center
Reactivity:	Human, Mouse, Rat, Pig
Host:	Rabbit
Clonality:	Polyclonal
Conjugate:	This MKL2 antibody is un-conjugated
Application:	Western Blotting (WB)

Product Details

Immunogen:	KLH-conjugated synthetic peptide encompassing a sequence within the center region of human MKL2.
Specificity:	Recognizes endogenous levels of MKL2 protein.
Characteristics:	Rabbit polyclonal antibody to MKL2
Purification:	The antibody was purified by immunogen affinity chromatography.

Target Details

Target:	MKL2
Alternative Name:	MKL2 (MKL2 Products)
Background:	KIAA1243, MRTFB, MKL/myocardin-like protein 2, Megakaryoblastic leukemia 2, Myocardin-

Target Details

	related transcription factor B, MRTF-B
Gene ID:	57496, 239719
UniProt:	Q9ULH7 , P59759

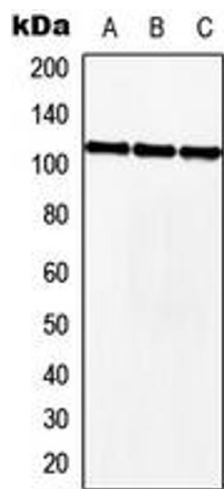
Application Details

Application Notes:	WB (1:500 - 1:1000)
Restrictions:	For Research Use only

Handling

Format:	Liquid
Buffer:	Liquid in 0.42 % Potassium phosphate, 0.87 % Sodium chloride, pH 7.3, 30 % glycerol, and 0.01 % sodium azide.
Preservative:	Sodium azide
Precaution of Use:	This product contains Sodium azide: a POISONOUS AND HAZARDOUS SUBSTANCE which should be handled by trained staff only.
Storage:	-20 °C
Storage Comment:	Shipped at 4°C. Upon delivery aliquot and store at -20°C for one year. Avoid freeze/thaw cycles.
Expiry Date:	12 months

Validation report #101129 for Western Blotting (WB)



Western Blotting

Image 1. Western blot analysis of MKL2 expression in HEK293T (A), NIH3T3 (B), H9C2 (C) whole cell lysates.