



[Go to Product page](#)

Datasheet for ABIN7298974
anti-RAPH1 antibody (Center)

1 Image

Overview

Quantity:	100 µL
Target:	RAPH1
Binding Specificity:	Center
Reactivity:	Human, Rat, Mouse
Host:	Rabbit
Clonality:	Polyclonal
Conjugate:	This RAPH1 antibody is un-conjugated
Application:	Western Blotting (WB)

Product Details

Immunogen:	KLH-conjugated synthetic peptide encompassing a sequence within the center region of human RAPH1.
Specificity:	Recognizes endogenous levels of RAPH1 protein.
Characteristics:	Rabbit polyclonal antibody to RAPH1
Purification:	The antibody was purified by immunogen affinity chromatography.

Target Details

Target:	RAPH1
Alternative Name:	RAPH1 (RAPH1 Products)
Background:	ALS2CR18, ALS2CR9, KIAA1681, LPD, PREL2, RMO1, Ras-associated and pleckstrin homology

Target Details

domains-containing protein 1, RAPH1, Amyotrophic lateral sclerosis 2 chromosomal region candidate gene 18 protein, Amyotrophic lateral sclerosis 2 chromosomal region candidate gene 9 protein, Lamellipodin, Proline-rich EVH1 ligand 2, PREL-2, Protein RMO1

Gene ID: 65059

UniProt: [Q70E73](#)

Application Details

Application Notes: WB (1:500 - 1:1000)

Restrictions: For Research Use only

Handling

Format: Liquid

Buffer: Liquid in 0.42 % Potassium phosphate, 0.87 % Sodium chloride, pH 7.3, 30 % glycerol, and 0.01 % sodium azide.

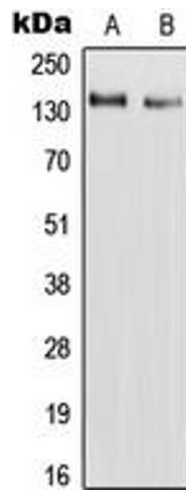
Preservative: Sodium azide

Precaution of Use: This product contains Sodium azide: a POISONOUS AND HAZARDOUS SUBSTANCE which should be handled by trained staff only.

Storage: -20 °C

Storage Comment: Shipped at 4°C. Upon delivery aliquot and store at -20°C for one year. Avoid freeze/thaw cycles.

Expiry Date: 12 months



Western Blotting

Image 1. Western blot analysis of RAPH1 expression in HepG2 (A), H9C2 (B) whole cell lysates.