

Datasheet for ABIN7299026
anti-FKSG2 antibody (Center)



[Go to Product page](#)

1 Image

Overview

Quantity:	100 µL
Target:	FKSG2
Binding Specificity:	Center
Reactivity:	Human, Mouse, Rat
Host:	Rabbit
Clonality:	Polyclonal
Conjugate:	This FKSG2 antibody is un-conjugated
Application:	Western Blotting (WB)

Product Details

Immunogen:	KLH-conjugated synthetic peptide encompassing a sequence within the center region of human FKSG2.
Specificity:	Recognizes endogenous levels of FKSG2 protein.
Characteristics:	Rabbit polyclonal antibody to FKSG2
Purification:	The antibody was purified by immunogen affinity chromatography.

Target Details

Target:	FKSG2
Alternative Name:	FKSG2 (FKSG2 Products)
Target Type:	Chemical

Target Details

Background:	Putative translationally-controlled tumor protein-like protein TPT1P8, Putative apoptosis inhibitor FKSG2
Gene ID:	59347
UniProt:	Q9HAU6

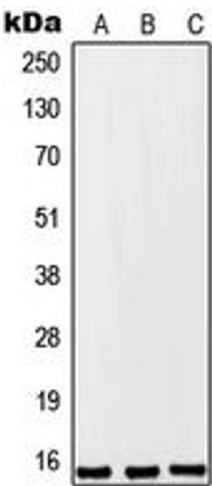
Application Details

Application Notes:	WB (1:500 - 1:1000)
Restrictions:	For Research Use only

Handling

Format:	Liquid
Buffer:	Liquid in 0.42 % Potassium phosphate, 0.87 % Sodium chloride, pH 7.3, 30 % glycerol, and 0.01 % sodium azide.
Preservative:	Sodium azide
Precaution of Use:	This product contains Sodium azide: a POISONOUS AND HAZARDOUS SUBSTANCE which should be handled by trained staff only.
Storage:	-20 °C
Storage Comment:	Shipped at 4°C. Upon delivery aliquot and store at -20°C for one year. Avoid freeze/thaw cycles.
Expiry Date:	12 months

Images



Western Blotting

Image 1. Western blot analysis of FKSG2 expression in A549 (A), Raw264.7 (B), PC12 (C) whole cell lysates.