

Datasheet for ABIN7299048

anti-beta 2 Adrenergic Receptor antibody (C-Term)



[Go to Product page](#)

2 Images

Overview

Quantity:	100 µL
Target:	beta 2 Adrenergic Receptor (ADRB2)
Binding Specificity:	C-Term
Reactivity:	Human, Rat, Mouse, Cow, Sheep, Dog
Host:	Rabbit
Clonality:	Polyclonal
Conjugate:	This beta 2 Adrenergic Receptor antibody is un-conjugated
Application:	Western Blotting (WB), Immunohistochemistry (IHC), Flow Cytometry (FACS)

Product Details

Immunogen:	KLH-conjugated synthetic peptide encompassing a sequence within the C-term region of human Beta-2 Adrenergic Receptor.
Specificity:	Recognizes endogenous levels of Beta-2 Adrenergic Receptor protein.
Characteristics:	Rabbit polyclonal antibody to Beta-2 Adrenergic Receptor
Purification:	The antibody was purified by immunogen affinity chromatography.

Target Details

Target:	beta 2 Adrenergic Receptor (ADRB2)
Alternative Name:	beta-2 Adrenergic Receptor (ADRB2 Products)
Background:	ADRB2R, B2AR, Beta-2 adrenergic receptor, Beta-2 adrenoreceptor, Beta-2 adrenoceptor

Target Details

Gene ID:	154, 11555
UniProt:	P07550 , P18762 , P10608
Pathways:	cAMP Metabolic Process , Synaptic Membrane , Regulation of G-Protein Coupled Receptor Protein Signaling , Brown Fat Cell Differentiation

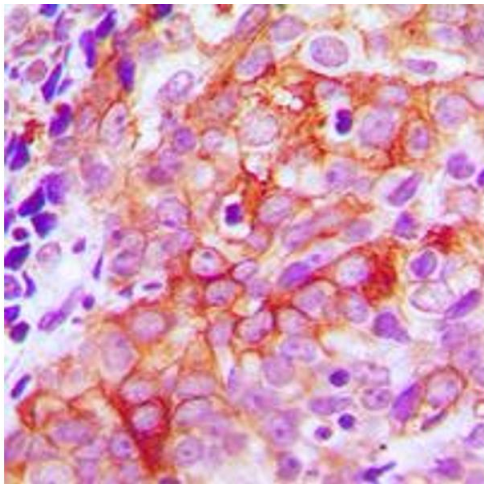
Application Details

Application Notes:	WB (1:500 - 1:1000), IH (1:100 - 1:200), FC (1:100 - 1:200)
Restrictions:	For Research Use only

Handling

Format:	Liquid
Buffer:	Liquid in 0.42 % Potassium phosphate, 0.87 % Sodium chloride, pH 7.3, 30 % glycerol, and 0.01 % sodium azide.
Preservative:	Sodium azide
Precaution of Use:	This product contains Sodium azide: a POISONOUS AND HAZARDOUS SUBSTANCE which should be handled by trained staff only.
Storage:	-20 °C
Storage Comment:	Shipped at 4°C. Upon delivery aliquot and store at -20°C for one year. Avoid freeze/thaw cycles.
Expiry Date:	12 months

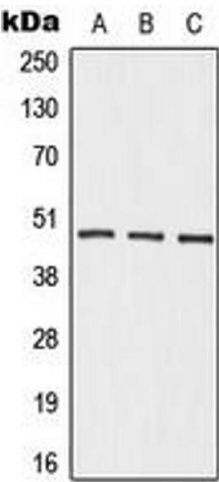
Images



Immunohistochemistry

Image 1. Immunohistochemical analysis of Beta-2 Adrenergic Receptor staining in human prostate cancer formalin fixed paraffin embedded tissue section. The section was pre-treated using heat mediated antigen retrieval with sodium citrate buffer (pH 6.0). The section was then incubated with the antibody at room temperature and detected using an HRP conjugated compact polymer system. DAB was used as the chromogen. The section was

then counterstained with haematoxylin and mounted with DPX.



Western Blotting

Image 2. Western blot analysis of Beta-2 Adrenergic Receptor expression in HepG2 (A), mouse kidney (B), rat kidney (C) whole cell lysates.