

Datasheet for ABIN7299068
anti-ALX3 antibody (Center)[Go to Product page](#)

3 Images

Overview

Quantity:	100 µL
Target:	ALX3
Binding Specificity:	Center
Reactivity:	Human, Mouse, Rat, Rabbit, Pig, Chicken
Host:	Rabbit
Clonality:	Polyclonal
Conjugate:	This ALX3 antibody is un-conjugated
Application:	Western Blotting (WB), Immunofluorescence (IF), Immunohistochemistry (IHC), Immunochromatography (IC)

Product Details

Immunogen:	KLH-conjugated synthetic peptide encompassing a sequence within the center region of human ALX3.
Specificity:	Recognizes endogenous levels of ALX3 protein.
Characteristics:	Rabbit polyclonal antibody to ALX3
Purification:	The antibody was purified by immunogen affinity chromatography.

Target Details

Target:	ALX3
Alternative Name:	ALX3 (ALX3 Products)

Target Details

Background:	Homeobox protein aristaless-like 3, Proline-rich transcription factor ALX3
Gene ID:	257, 11694
UniProt:	O95076 , O70137

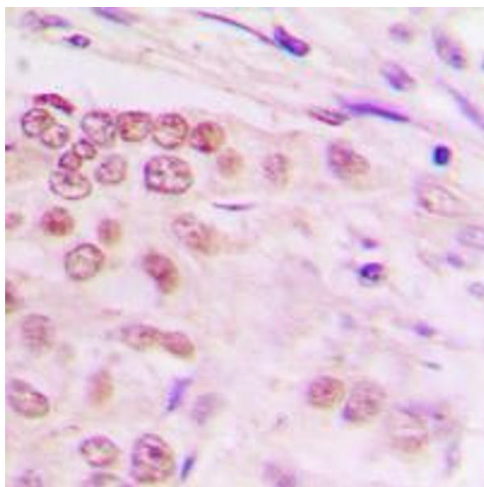
Application Details

Application Notes:	WB (1:500 - 1:1000), IH (1:100 - 1:200), IF/IC (1:100 - 1:500)
Restrictions:	For Research Use only

Handling

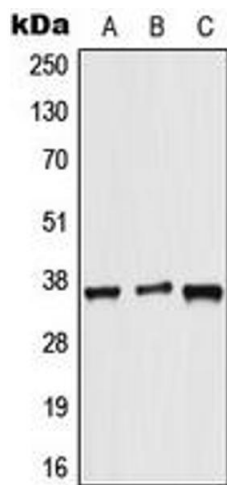
Format:	Liquid
Buffer:	Liquid in 0.42 % Potassium phosphate, 0.87 % Sodium chloride, pH 7.3, 30 % glycerol, and 0.01 % sodium azide.
Preservative:	Sodium azide
Precaution of Use:	This product contains Sodium azide: a POISONOUS AND HAZARDOUS SUBSTANCE which should be handled by trained staff only.
Storage:	-20 °C
Storage Comment:	Shipped at 4°C. Upon delivery aliquot and store at -20°C for one year. Avoid freeze/thaw cycles.
Expiry Date:	12 months

Images



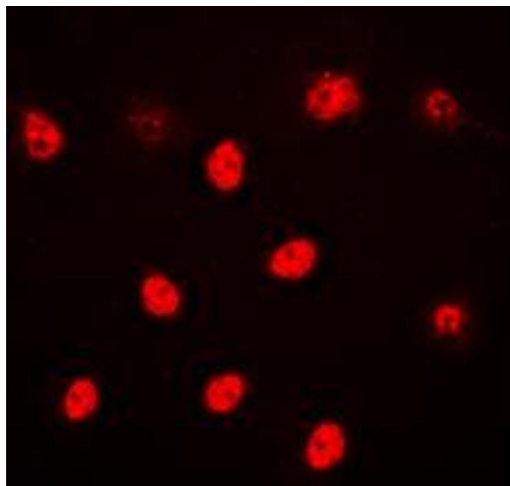
Immunohistochemistry

Image 1. Immunohistochemical analysis of ALX3 staining in human lung cancer formalin fixed paraffin embedded tissue section. The section was pre-treated using heat mediated antigen retrieval with sodium citrate buffer (pH 6.0). The section was then incubated with the antibody at room temperature and detected using an HRP conjugated compact polymer system. DAB was used as the chromogen. The section was then counterstained with haematoxylin and mounted with DPX.



Western Blotting

Image 2. Western blot analysis of ALX3 expression in HeLa (A), NIH3T3 (B), rat brain (C) whole cell lysates.



Immunofluorescence

Image 3. Immunofluorescent analysis of ALX3 staining in HeLa cells. Formalin-fixed cells were permeabilized with 0.1% Triton X-100 in TBS for 5-10 minutes and blocked with 3% BSA-PBS for 30 minutes at room temperature. Cells were probed with the primary antibody in 3% BSA-PBS and incubated overnight at 4 °C in a humidified chamber. Cells were washed with PBST and incubated with a DyLight 594-conjugated secondary antibody (red) in PBS at room temperature in the dark. DAPI was used to stain the cell nuclei (blue).