

Datasheet for ABIN7299070  
**anti-SLC25A6 antibody (Center)**[Go to Product page](#)

## 2 Images

## Overview

Quantity:	100 µL
Target:	SLC25A6
Binding Specificity:	Center
Reactivity:	Human, Mouse, Rat, Monkey
Host:	Rabbit
Clonality:	Polyclonal
Conjugate:	This SLC25A6 antibody is un-conjugated
Application:	Western Blotting (WB), Immunohistochemistry (IHC)

## Product Details

Immunogen:	KLH-conjugated synthetic peptide encompassing a sequence within the center region of human ANT3.
Specificity:	Recognizes endogenous levels of ANT3 protein.
Characteristics:	Rabbit polyclonal antibody to ANT3
Purification:	The antibody was purified by immunogen affinity chromatography.

## Target Details

Target:	SLC25A6
Alternative Name:	ANT3 ( <a href="#">SLC25A6 Products</a> )
Background:	ANT3, ADP/ATP translocase 3, ADP,ATP carrier protein 3, ADP,ATP carrier protein, isoform T2,

## Target Details

ANT 2, Adenine nucleotide translocator 3, ANT 3, Solute carrier family 25 member 6

Gene ID: 293

UniProt: [P12236](#)

## Application Details

Application Notes: WB (1:500 - 1:1000), IH (1:100 - 1:200)

Restrictions: For Research Use only

## Handling

Format: Liquid

Buffer: Liquid in 0.42 % Potassium phosphate, 0.87 % Sodium chloride, pH 7.3, 30 % glycerol, and 0.01 % sodium azide.

Preservative: Sodium azide

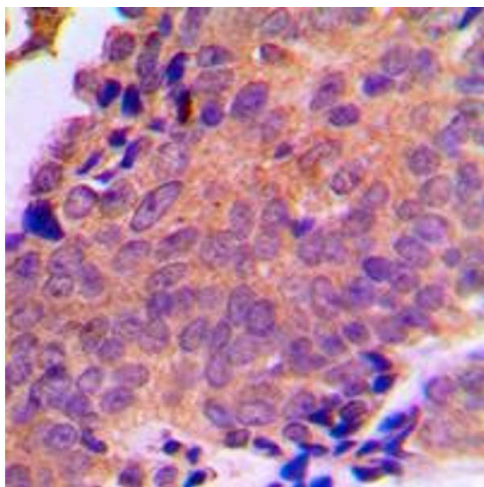
Precaution of Use: This product contains Sodium azide: a POISONOUS AND HAZARDOUS SUBSTANCE which should be handled by trained staff only.

Storage: -20 °C

Storage Comment: Shipped at 4°C. Upon delivery aliquot and store at -20°C for one year. Avoid freeze/thaw cycles.

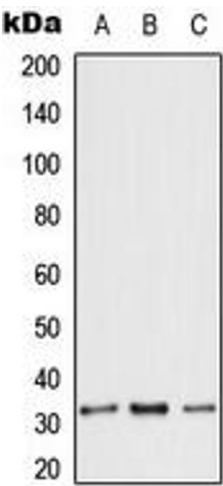
Expiry Date: 12 months

## Images



### Immunohistochemistry

**Image 1.** Immunohistochemical analysis of ANT3 staining in human breast cancer formalin fixed paraffin embedded tissue section. The section was pre-treated using heat mediated antigen retrieval with sodium citrate buffer (pH 6.0). The section was then incubated with the antibody at room temperature and detected using an HRP conjugated compact polymer system. DAB was used as the chromogen. The section was then counterstained with haematoxylin and mounted with DPX.



Western Blotting

**Image 2.** Western blot analysis of ANT3 expression in HeLa (A), Raw264.7 (B), rat heart (C) whole cell lysates.