

Datasheet for ABIN7299078

anti-beta Amyloid antibody (C-Term, pSer743)**2** Images[Go to Product page](#)

Overview

Quantity:	100 µL
Target:	beta Amyloid (Abeta)
Binding Specificity:	C-Term, pSer743
Reactivity:	Human, Mouse, Rat, Pig, Dog, Chicken, Zebrafish (Danio rerio)
Host:	Rabbit
Clonality:	Polyclonal
Conjugate:	This beta Amyloid antibody is un-conjugated
Application:	Western Blotting (WB), Immunohistochemistry (IHC)

Product Details

Immunogen:	KLH-conjugated synthetic peptide encompassing a sequence within the C-term region of human Beta Amyloid.
Specificity:	Recognizes endogenous levels of Beta Amyloid (pT743) protein.
Characteristics:	Rabbit polyclonal antibody to Beta Amyloid (pT743)
Purification:	The antibody was purified by immunogen affinity chromatography.

Target Details

Target:	beta Amyloid (Abeta)
Alternative Name:	beta Amyloid (Abeta Products)
Background:	A4, AD1, Amyloid beta A4 protein, ABPP, APPI, APP, Alzheimer disease amyloid protein, Cerebral

Target Details

	vascular amyloid peptide, CVAP, PreA4, Protease nexin-II, PN-II
Gene ID:	351, 11820, 54226
UniProt:	P05067 , P12023 , P08592
Pathways:	Inflammasome

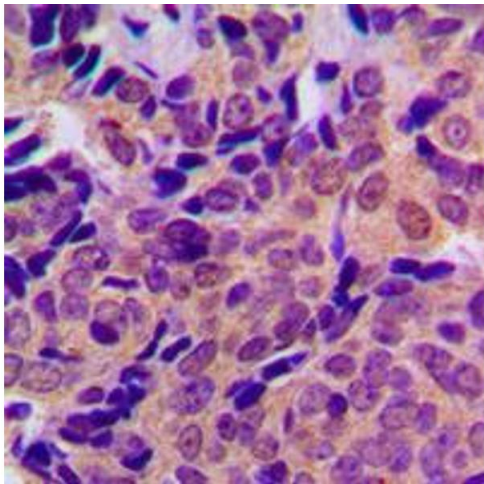
Application Details

Application Notes:	WB (1:500 - 1:1000), IH (1:100 - 1:200)
Restrictions:	For Research Use only

Handling

Format:	Liquid
Buffer:	Liquid in 0.42 % Potassium phosphate, 0.87 % Sodium chloride, pH 7.3, 30 % glycerol, and 0.01 % sodium azide.
Preservative:	Sodium azide
Precaution of Use:	This product contains Sodium azide: a POISONOUS AND HAZARDOUS SUBSTANCE which should be handled by trained staff only.
Storage:	-20 °C
Storage Comment:	Shipped at 4°C. Upon delivery aliquot and store at -20°C for one year. Avoid freeze/thaw cycles.
Expiry Date:	12 months

Images



Immunohistochemistry

Image 1. Immunohistochemical analysis of Beta Amyloid (pT743) staining in human breast cancer formalin fixed paraffin embedded tissue section. The section was pre-treated using heat mediated antigen retrieval with sodium citrate buffer (pH 6.0). The section was then incubated with the antibody at room temperature and detected using an HRP conjugated compact polymer system. DAB was used as the chromogen. The section was then counterstained

with haematoxylin and mounted with DPX.

Western Blotting

Image 2. Western blot analysis of Beta Amyloid (pT743) expression in MCF7 colchicine-treated (A), mouse liver (B), PC12 (C) whole cell lysates.

