

Datasheet for ABIN7299088

anti-Arylsulfatase D antibody (Center)

3 Images

[Go to Product page](#)

Overview

Quantity:	100 µL
Target:	Arylsulfatase D (ARSD)
Binding Specificity:	Center
Reactivity:	Human, Mouse
Host:	Rabbit
Clonality:	Polyclonal
Conjugate:	This Arylsulfatase D antibody is un-conjugated
Application:	Western Blotting (WB), Immunohistochemistry (IHC), Immunofluorescence (IF), Immunochromatography (IC)

Product Details

Immunogen:	KLH-conjugated synthetic peptide encompassing a sequence within the center region of human Arylsulfatase D.
Specificity:	Recognizes endogenous levels of Arylsulfatase D protein.
Characteristics:	Rabbit polyclonal antibody to Arylsulfatase D
Purification:	The antibody was purified by immunogen affinity chromatography.

Target Details

Target:	Arylsulfatase D (ARSD)
Alternative Name:	Arylsulfatase D (ARSD Products)

Target Details

Background: Arylsulfatase D, ASD

Gene ID: 414

UniProt: [P51689](#)

Application Details

Application Notes: WB (1:500 - 1:1000), IH (1:100 - 1:200), IF/IC (1:100 - 1:500)

Restrictions: For Research Use only

Handling

Format: Liquid

Buffer: Liquid in 0.42 % Potassium phosphate, 0.87 % Sodium chloride, pH 7.3, 30 % glycerol, and 0.01 % sodium azide.

Preservative: Sodium azide

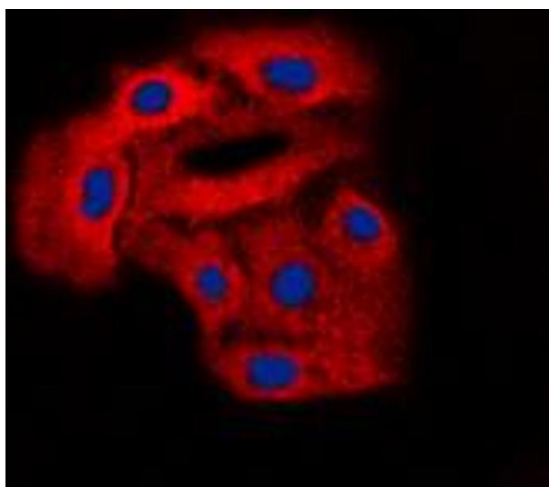
Precaution of Use: This product contains Sodium azide: a POISONOUS AND HAZARDOUS SUBSTANCE which should be handled by trained staff only.

Storage: -20 °C

Storage Comment: Shipped at 4°C. Upon delivery aliquot and store at -20°C for one year. Avoid freeze/thaw cycles.

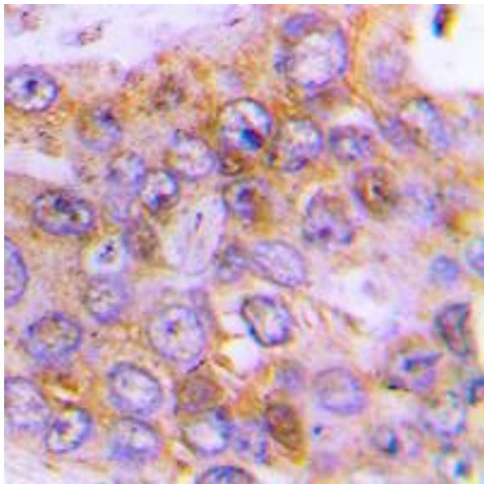
Expiry Date: 12 months

Images



Immunofluorescence

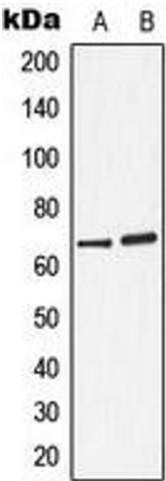
Image 1. Immunofluorescent analysis of Arylsulfatase D staining in A549 cells. Formalin-fixed cells were permeabilized with 0.1% Triton X-100 in TBS for 5-10 minutes and blocked with 3% BSA-PBS for 30 minutes at room temperature. Cells were probed with the primary antibody in 3% BSA-PBS and incubated overnight at 4 °C in a humidified chamber. Cells were washed with PBST and incubated with a DyLight 594-conjugated secondary antibody (red) in PBS at room temperature in the dark. DAPI



was used to stain the cell nuclei (blue).

Immunohistochemistry

Image 2. Immunohistochemical analysis of Arylsulfatase D staining in human lung cancer formalin fixed paraffin embedded tissue section. The section was pre-treated using heat mediated antigen retrieval with sodium citrate buffer (pH 6.0). The section was then incubated with the antibody at room temperature and detected using an HRP conjugated compact polymer system. DAB was used as the chromogen. The section was then counterstained with haematoxylin and mounted with DPX.



Western Blotting

Image 3. Western blot analysis of Arylsulfatase D expression in A549 (A), ZR751 (B) whole cell lysates.