

Datasheet for ABIN7299106
anti-BCL2L2 antibody (C-Term)[Go to Product page](#)

3 Images

Overview

Quantity:	100 µL
Target:	BCL2L2
Binding Specificity:	C-Term
Reactivity:	Human, Mouse, Rat, Dog, Cow
Host:	Rabbit
Clonality:	Polyclonal
Conjugate:	This BCL2L2 antibody is un-conjugated
Application:	Western Blotting (WB), Immunohistochemistry (IHC), Immunofluorescence (IF), Immunochromatography (IC)

Product Details

Immunogen:	KLH-conjugated synthetic peptide encompassing a sequence within the C-term region of human BCLW.
Specificity:	Recognizes endogenous levels of BCLW protein.
Characteristics:	Rabbit polyclonal antibody to BCLW
Purification:	The antibody was purified by immunogen affinity chromatography.

Target Details

Target:	BCL2L2
Alternative Name:	BCLW (BCL2L2 Products)

Target Details

Background:	BCLW, KIAA0271, Bcl-2-like protein 2, Bcl2-L-2, Apoptosis regulator Bcl-W
Gene ID:	599, 12050
UniProt:	Q92843 , P70345

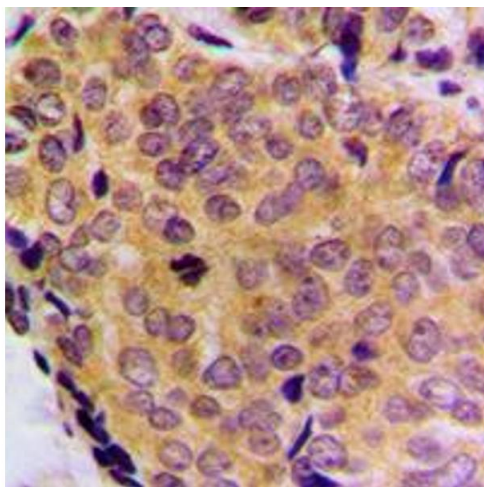
Application Details

Application Notes:	WB (1:500 - 1:1000), IH (1:100 - 1:200), IF/IC (1:100 - 1:500)
Restrictions:	For Research Use only

Handling

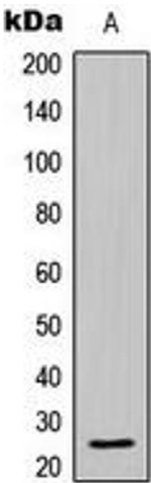
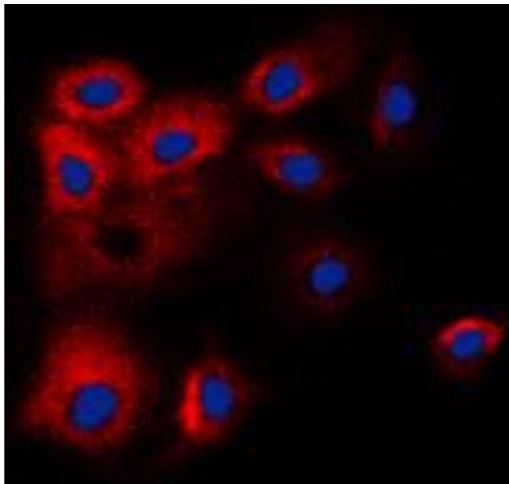
Format:	Liquid
Buffer:	Liquid in 0.42 % Potassium phosphate, 0.87 % Sodium chloride, pH 7.3, 30 % glycerol, and 0.01 % sodium azide.
Preservative:	Sodium azide
Precaution of Use:	This product contains Sodium azide: a POISONOUS AND HAZARDOUS SUBSTANCE which should be handled by trained staff only.
Storage:	-20 °C
Storage Comment:	Shipped at 4°C. Upon delivery aliquot and store at -20°C for one year. Avoid freeze/thaw cycles.
Expiry Date:	12 months

Images



Immunohistochemistry

Image 1. Immunohistochemical analysis of BCLW staining in human breast cancer formalin fixed paraffin embedded tissue section. The section was pre-treated using heat mediated antigen retrieval with sodium citrate buffer (pH 6.0). The section was then incubated with the antibody at room temperature and detected using an HRP conjugated compact polymer system. DAB was used as the chromogen. The section was then counterstained with haematoxylin and mounted with DPX.



Immunofluorescence

Image 2. Immunofluorescent analysis of BCLW staining in HL60 cells. Formalin-fixed cells were permeabilized with 0.1% Triton X-100 in TBS for 5-10 minutes and blocked with 3% BSA-PBS for 30 minutes at room temperature. Cells were probed with the primary antibody in 3% BSA-PBS and incubated overnight at 4 °C in a humidified chamber. Cells were washed with PBST and incubated with a DyLight 594-conjugated secondary antibody (red) in PBS at room temperature in the dark. DAPI was used to stain the cell nuclei (blue).

Western Blotting

Image 3. Western blot analysis of BCLW expression in HL60 (A) whole cell lysates.