



Datasheet for ABIN7299220
anti-DUSP1 antibody (C-Term)



[Go to Product page](#)

2 Images

Overview

Quantity:	100 µL
Target:	DUSP1
Binding Specificity:	C-Term
Reactivity:	Human, Cow, Chicken, Rabbit, Sheep
Host:	Rabbit
Clonality:	Polyclonal
Conjugate:	This DUSP1 antibody is un-conjugated
Application:	Western Blotting (WB), Immunohistochemistry (IHC)

Product Details

Immunogen:	KLH-conjugated synthetic peptide encompassing a sequence within the C-term region of human DUSP1.
Specificity:	Recognizes endogenous levels of DUSP1 protein.
Characteristics:	Rabbit polyclonal antibody to DUSP1
Purification:	The antibody was purified by immunogen affinity chromatography.

Target Details

Target:	DUSP1
Alternative Name:	DUSP1 (DUSP1 Products)
Background:	CL100, MKP1, PTPN10, VH1, Dual specificity protein phosphatase 1, Dual specificity protein

Target Details

phosphatase hVH1, Mitogen-activated protein kinase phosphatase 1, MAP kinase phosphatase 1, MKP-1, Protein-tyrosine phosphatase CL100

Gene ID: 1843

UniProt: [P28562](#)

Application Details

Application Notes: WB (1:500 - 1:1000), IH (1:100 - 1:200)

Restrictions: For Research Use only

Handling

Format: Liquid

Buffer: Liquid in 0.42 % Potassium phosphate, 0.87 % Sodium chloride, pH 7.3, 30 % glycerol, and 0.01 % sodium azide.

Preservative: Sodium azide

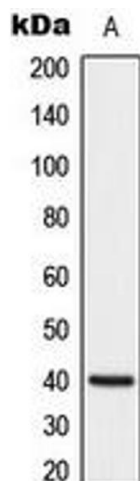
Precaution of Use: This product contains Sodium azide: a POISONOUS AND HAZARDOUS SUBSTANCE which should be handled by trained staff only.

Storage: -20 °C

Storage Comment: Shipped at 4°C. Upon delivery aliquot and store at -20°C for one year. Avoid freeze/thaw cycles.

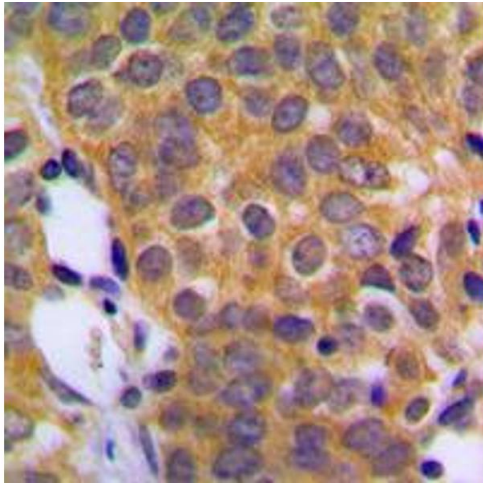
Expiry Date: 12 months

Images



Western Blotting

Image 1. Western blot analysis of DUSP1 expression in HeLa (A) whole cell lysates.



Immunohistochemistry

Image 2. Immunohistochemical analysis of DUSP1 staining in human prostate cancer formalin fixed paraffin embedded tissue section. The section was pre-treated using heat mediated antigen retrieval with sodium citrate buffer (pH 6.0). The section was then incubated with the antibody at room temperature and detected using an HRP conjugated compact polymer system. DAB was used as the chromogen. The section was then counterstained with haematoxylin and mounted with DPX.