

Datasheet for ABIN7299236

anti-ELK3 antibody (C-Term, pSer357)**2** Images[Go to Product page](#)

Overview

Quantity:	100 µL
Target:	ELK3
Binding Specificity:	C-Term, pSer357
Reactivity:	Human, Mouse, Rat, Cow, Zebrafish (Danio rerio)
Host:	Rabbit
Clonality:	Polyclonal
Conjugate:	This ELK3 antibody is un-conjugated
Application:	Western Blotting (WB), Immunofluorescence (IF), Immunoprecipitation (IP), Immunochromatography (IC)

Product Details

Immunogen:	KLH-conjugated synthetic peptide encompassing a sequence within the C-term region of human NET.
Specificity:	Recognizes endogenous levels of NET (pS357) protein.
Characteristics:	Rabbit polyclonal antibody to NET (pS357)
Purification:	The antibody was purified by immunogen affinity chromatography.

Target Details

Target:	ELK3
Alternative Name:	NET (ELK3 Products)

Target Details

Background:	NET, SAP2, ETS domain-containing protein Elk-3, ETS-related protein ERP, ETS-related protein NET, Serum response factor accessory protein 2, SAP-2, SRF accessory protein 2
Gene ID:	2004, 13713
UniProt:	P41970 , P41971

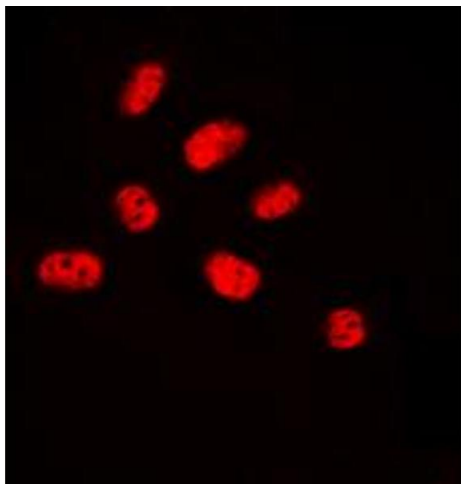
Application Details

Application Notes:	WB (1:500 - 1:1000), IF/IC (1:100 - 1:500), IP (1:10 - 1:100)
Restrictions:	For Research Use only

Handling

Format:	Liquid
Buffer:	Liquid in 0.42 % Potassium phosphate, 0.87 % Sodium chloride, pH 7.3, 30 % glycerol, and 0.01 % sodium azide.
Preservative:	Sodium azide
Precaution of Use:	This product contains Sodium azide: a POISONOUS AND HAZARDOUS SUBSTANCE which should be handled by trained staff only.
Storage:	-20 °C
Storage Comment:	Shipped at 4°C. Upon delivery aliquot and store at -20°C for one year. Avoid freeze/thaw cycles.
Expiry Date:	12 months

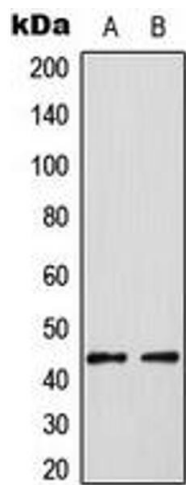
Images



Immunofluorescence

Image 1. Immunofluorescent analysis of NET (pS357) staining in HUVEC cells. Formalin-fixed cells were permeabilized with 0.1% Triton X-100 in TBS for 5-10 minutes and blocked with 3% BSA-PBS for 30 minutes at room temperature. Cells were probed with the primary antibody in 3% BSA-PBS and incubated overnight at 4 °C in a humidified chamber. Cells were washed with PBST and incubated with a DyLight 594-conjugated secondary

antibody (red) in PBS at room temperature in the dark. DAPI was used to stain the cell nuclei (blue).



Western Blotting

Image 2. Western blot analysis of NET (pS357) expression in HUVEC PMA-treated (A), HT29 PMA-treated (B) whole cell lysates.