

Datasheet for ABIN7299242

**anti-Cortactin antibody (C-Term, pTyr466)**[Go to Product page](#)**3** Images

## Overview

Quantity:	100 µL
Target:	Cortactin (CTTN)
Binding Specificity:	C-Term, pTyr466
Reactivity:	Human, Mouse
Host:	Rabbit
Clonality:	Polyclonal
Conjugate:	This Cortactin antibody is un-conjugated
Application:	Western Blotting (WB), Immunohistochemistry (IHC), Immunofluorescence (IF), Immunoprecipitation (IP), Immunochromatography (IC)

## Product Details

Immunogen:	KLH-conjugated synthetic peptide encompassing a sequence within the C-term region of human Cortactin.
Specificity:	Recognizes endogenous levels of Cortactin (pY466) protein.
Characteristics:	Rabbit polyclonal antibody to Cortactin (pY466)
Purification:	The antibody was purified by immunogen affinity chromatography.

## Target Details

Target:	Cortactin (CTTN)
Alternative Name:	Cortactin ( <a href="#">CTTN Products</a> )

## Target Details

Background:	EMS1, Src substrate cortactin, Amplexin, Oncogene EMS1
Gene ID:	2017, 13043
UniProt:	<a href="#">Q14247</a> , <a href="#">Q60598</a>
Pathways:	<a href="#">MAPK Signaling</a>

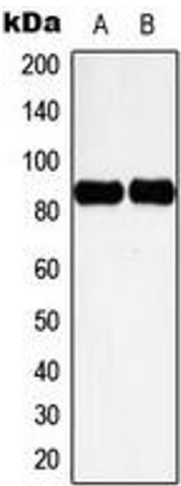
## Application Details

Application Notes:	WB (1:500 - 1:1000), IH (1:100 - 1:200), IF/IC (1:100 - 1:500), IP (1:10 - 1:100)
Restrictions:	For Research Use only

## Handling

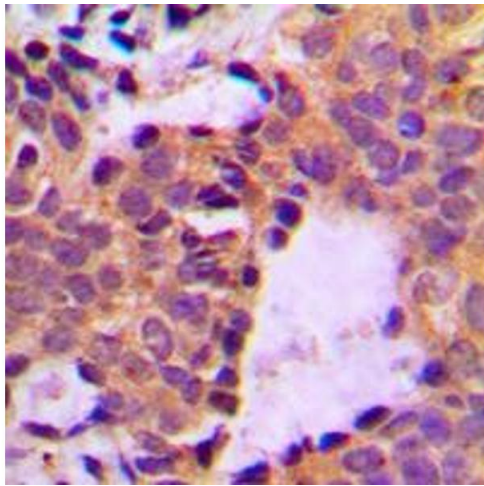
Format:	Liquid
Buffer:	Liquid in 0.42 % Potassium phosphate, 0.87 % Sodium chloride, pH 7.3, 30 % glycerol, and 0.01 % sodium azide.
Preservative:	Sodium azide
Precaution of Use:	This product contains Sodium azide: a POISONOUS AND HAZARDOUS SUBSTANCE which should be handled by trained staff only.
Storage:	-20 °C
Storage Comment:	Shipped at 4°C. Upon delivery aliquot and store at -20°C for one year. Avoid freeze/thaw cycles.
Expiry Date:	12 months

## Images



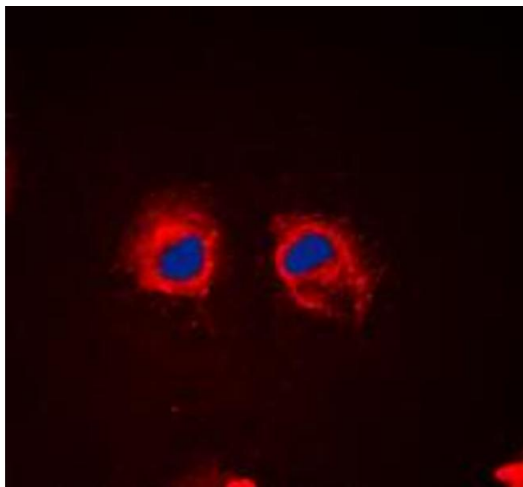
### Western Blotting

**Image 1.** Western blot analysis of Cortactin (pY466) expression in HeLa UV-treated (A), NIH3T3 H2O2-treated (B) whole cell lysates.



#### Immunohistochemistry

**Image 2.** Immunohistochemical analysis of Cortactin (pY466) staining in human breast cancer formalin fixed paraffin embedded tissue section. The section was pre-treated using heat mediated antigen retrieval with sodium citrate buffer (pH 6.0). The section was then incubated with the antibody at room temperature and detected using an HRP conjugated compact polymer system. DAB was used as the chromogen. The section was then counterstained with haematoxylin and mounted with DPX.



#### Immunofluorescence

**Image 3.** Immunofluorescent analysis of Cortactin (pY466) staining in HeLa cells. Formalin-fixed cells were permeabilized with 0.1% Triton X-100 in TBS for 5-10 minutes and blocked with 3% BSA-PBS for 30 minutes at room temperature. Cells were probed with the primary antibody in 3% BSA-PBS and incubated overnight at 4 °C in a humidified chamber. Cells were washed with PBST and incubated with a DyLight 594-conjugated secondary antibody (red) in PBS at room temperature in the dark. DAPI was used to stain the cell nuclei (blue).