



[Go to Product page](#)

Datasheet for ABIN7299284
anti-GUCY1B2 antibody (N-Term)

2 Images

Overview

Quantity:	100 µL
Target:	GUCY1B2
Binding Specificity:	N-Term
Reactivity:	Human, Mouse, Rat
Host:	Rabbit
Clonality:	Polyclonal
Conjugate:	This GUCY1B2 antibody is un-conjugated
Application:	Immunohistochemistry (IHC), Western Blotting (WB)

Product Details

Immunogen:	KLH-conjugated synthetic peptide encompassing a sequence within the N-term region of human GUCY1B2.
Specificity:	Recognizes endogenous levels of GUCY1B2 protein.
Characteristics:	Rabbit polyclonal antibody to GUCY1B2
Purification:	The antibody was purified by immunogen affinity chromatography.

Target Details

Target:	GUCY1B2
Alternative Name:	GUCY1B2 (GUCY1B2 Products)
Background:	Guanylate cyclase soluble subunit beta-2, GCS-beta-2

Target Details

Gene ID: 2974, 25206

UniProt: [O75343](#), [P22717](#)

Application Details

Application Notes: WB (1:500 - 1:1000), IH (1:100 - 1:200)

Restrictions: For Research Use only

Handling

Format: Liquid

Buffer: Liquid in 0.42 % Potassium phosphate, 0.87 % Sodium chloride, pH 7.3, 30 % glycerol, and 0.01 % sodium azide.

Preservative: Sodium azide

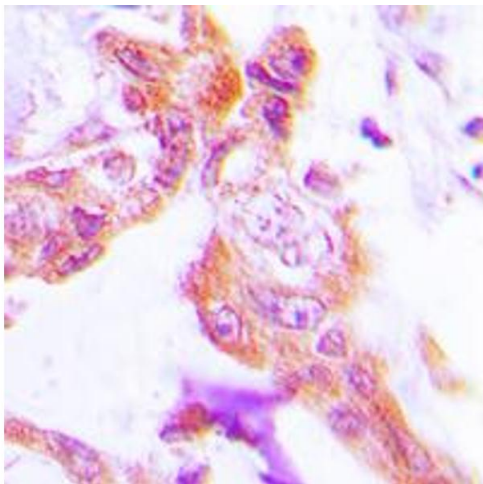
Precaution of Use: This product contains Sodium azide: a POISONOUS AND HAZARDOUS SUBSTANCE which should be handled by trained staff only.

Storage: -20 °C

Storage Comment: Shipped at 4°C. Upon delivery aliquot and store at -20°C for one year. Avoid freeze/thaw cycles.

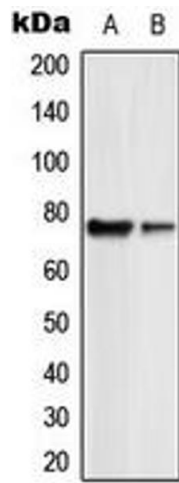
Expiry Date: 12 months

Images



Immunohistochemistry

Image 1. Immunohistochemical analysis of GUCY1B2 staining in human lung cancer formalin fixed paraffin embedded tissue section. The section was pre-treated using heat mediated antigen retrieval with sodium citrate buffer (pH 6.0). The section was then incubated with the antibody at room temperature and detected using an HRP conjugated compact polymer system. DAB was used as the chromogen. The section was then counterstained with haematoxylin and mounted with DPX.



Western Blotting

Image 2. Western blot analysis of GUCY1B2 expression in HL60 (A), Jurkat (B) whole cell lysates.