



Datasheet for ABIN7299290  
**anti-HCFC1 antibody (N-Term)**



[Go to Product page](#)

2 Images

Overview

Quantity:	100 µL
Target:	HCFC1
Binding Specificity:	N-Term
Reactivity:	Human, Mouse, Zebrafish (Danio rerio)
Host:	Rabbit
Clonality:	Polyclonal
Conjugate:	This HCFC1 antibody is un-conjugated
Application:	Western Blotting (WB), Immunohistochemistry (IHC)

Product Details

Immunogen:	KLH-conjugated synthetic peptide encompassing a sequence within the N-term region of human HCFC1.
Specificity:	Recognizes endogenous levels of HCFC1 protein.
Characteristics:	Rabbit polyclonal antibody to HCFC1
Purification:	The antibody was purified by immunogen affinity chromatography.

Target Details

Target:	HCFC1
Alternative Name:	HCFC1 ( <a href="#">HCFC1 Products</a> )
Background:	HCF1, HFC1, Host cell factor 1, HCF, HCF-1, C1 factor, CFF, VCAF, VP16 accessory protein

## Target Details

Gene ID: 3054, 15161

UniProt: [P51610](#), [Q61191](#)

## Application Details

Application Notes: WB (1:500 - 1:1000), IH (1:100 - 1:200)

Restrictions: For Research Use only

## Handling

Format: Liquid

Buffer: Liquid in 0.42 % Potassium phosphate, 0.87 % Sodium chloride, pH 7.3, 30 % glycerol, and 0.01 % sodium azide.

Preservative: Sodium azide

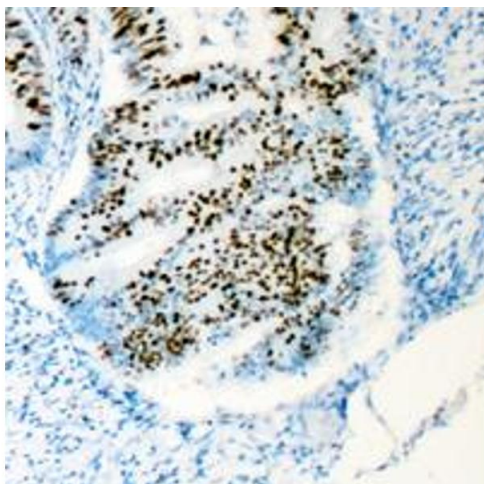
Precaution of Use: This product contains Sodium azide: a POISONOUS AND HAZARDOUS SUBSTANCE which should be handled by trained staff only.

Storage: -20 °C

Storage Comment: Shipped at 4°C. Upon delivery aliquot and store at -20°C for one year. Avoid freeze/thaw cycles.

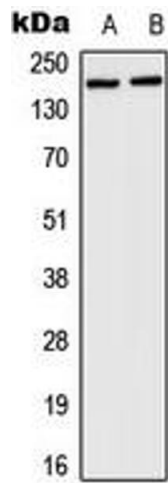
Expiry Date: 12 months

## Images



### Immunohistochemistry

**Image 1.** Immunohistochemical analysis of HCFC1 staining in human colon cancer formalin fixed paraffin embedded tissue section. The section was pre-treated using heat mediated antigen retrieval with sodium citrate buffer (pH 6.0). The section was then incubated with the antibody at room temperature and detected using an HRP conjugated compact polymer system. DAB was used as the chromogen. The section was then counterstained with haematoxylin and mounted with DPX.



### Western Blotting

**Image 2.** Western blot analysis of HCFC1 expression in HeLa (A), mouse brain (B) whole cell lysates.