

Datasheet for ABIN7299372  
**anti-NAB2 antibody (Center)**[Go to Product page](#)

## 2 Images

## Overview

Quantity:	100 µL
Target:	NAB2
Binding Specificity:	Center
Reactivity:	Human, Mouse, Rat, Cow
Host:	Rabbit
Clonality:	Polyclonal
Conjugate:	This NAB2 antibody is un-conjugated
Application:	Western Blotting (WB), Immunohistochemistry (IHC)

## Product Details

Immunogen:	KLH-conjugated synthetic peptide encompassing a sequence within the center region of human NAB2.
Specificity:	Recognizes endogenous levels of NAB2 protein.
Characteristics:	Rabbit polyclonal antibody to NAB2
Purification:	The antibody was purified by immunogen affinity chromatography.

## Target Details

Target:	NAB2
Alternative Name:	NAB2 ( <a href="#">NAB2 Products</a> )
Background:	MADER, NGFI-A-binding protein 2, EGR-1-binding protein 2, Melanoma-associated delayed early

## Target Details

response protein, Protein MADER

Gene ID: 4665, 17937

UniProt: [Q15742](#), [Q61127](#)

## Application Details

Application Notes: WB (1:500 - 1:1000), IH (1:100 - 1:200)

Restrictions: For Research Use only

## Handling

Format: Liquid

Buffer: Liquid in 0.42 % Potassium phosphate, 0.87 % Sodium chloride, pH 7.3, 30 % glycerol, and 0.01 % sodium azide.

Preservative: Sodium azide

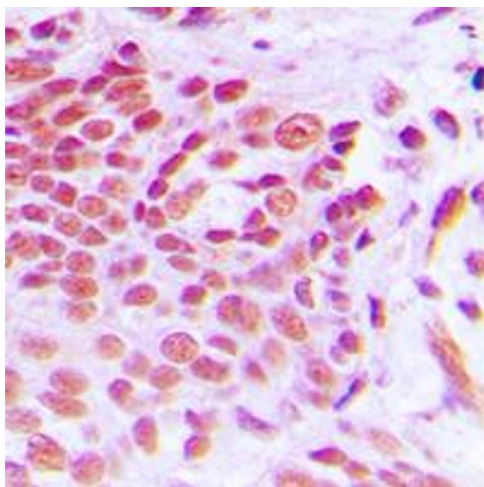
Precaution of Use: This product contains Sodium azide: a POISONOUS AND HAZARDOUS SUBSTANCE which should be handled by trained staff only.

Storage: -20 °C

Storage Comment: Shipped at 4°C. Upon delivery aliquot and store at -20°C for one year. Avoid freeze/thaw cycles.

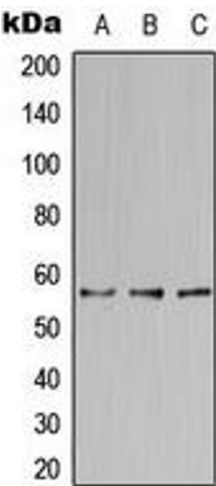
Expiry Date: 12 months

## Images



### Immunohistochemistry

**Image 1.** Immunohistochemical analysis of NAB2 staining in human breast cancer formalin fixed paraffin embedded tissue section. The section was pre-treated using heat mediated antigen retrieval with sodium citrate buffer (pH 6.0). The section was then incubated with the antibody at room temperature and detected using an HRP conjugated compact polymer system. DAB was used as the chromogen. The section was then counterstained with haematoxylin and mounted with DPX.



Western Blotting

**Image 2.** Western blot analysis of NAB2 expression in HepG2 (A), HeLa (B), Raw264.7 (C) whole cell lysates.