

Datasheet for ABIN7299390
anti-PLA2G4A antibody (pSer505)

3 Images

[Go to Product page](#)

Overview

Quantity:	100 µL
Target:	PLA2G4A
Binding Specificity:	pSer505
Reactivity:	Human, Mouse, Monkey
Host:	Rabbit
Clonality:	Polyclonal
Conjugate:	This PLA2G4A antibody is un-conjugated
Application:	Western Blotting (WB), Immunohistochemistry (IHC), Immunofluorescence (IF), Immunochromatography (IC)

Product Details

Immunogen:	KLH-conjugated synthetic peptide encompassing a sequence within the center region of human PLA2G4A.
Specificity:	Recognizes endogenous levels of PLA2G4A (pS505) protein.
Characteristics:	Rabbit polyclonal antibody to PLA2G4A (pS505)
Purification:	The antibody was purified by immunogen affinity chromatography.

Target Details

Target:	PLA2G4A
Alternative Name:	PLA2G4A (PLA2G4A Products)

Target Details

Background:	CPLA2, PLA2G4, Cytosolic phospholipase A2, cPLA2, Phospholipase A2 group IVA
Gene ID:	5321, 18783
UniProt:	P47712 , P47713
Pathways:	Inositol Metabolic Process , G-protein mediated Events , VEGF Signaling

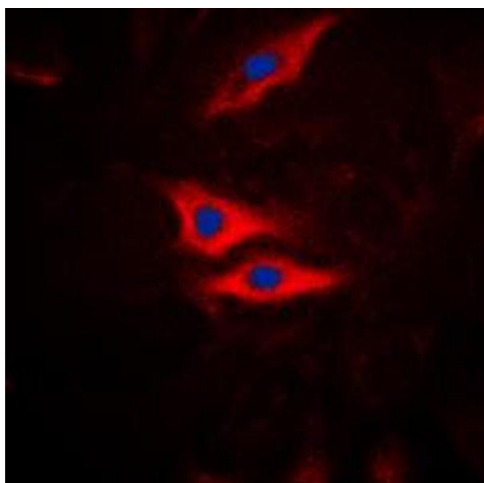
Application Details

Application Notes:	WB (1:500 - 1:1000), IH (1:100 - 1:200), IF/IC (1:100 - 1:500)
Restrictions:	For Research Use only

Handling

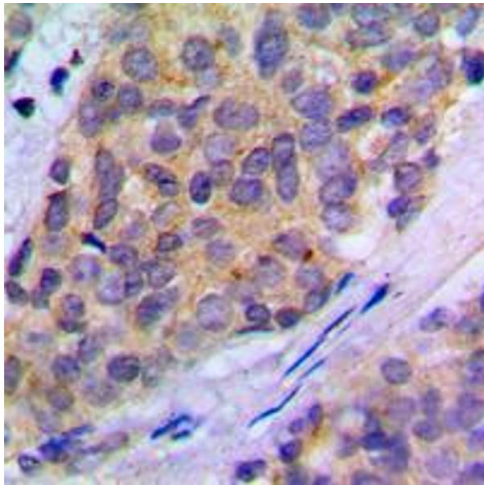
Format:	Liquid
Buffer:	Liquid in 0.42 % Potassium phosphate, 0.87 % Sodium chloride, pH 7.3, 30 % glycerol, and 0.01 % sodium azide.
Preservative:	Sodium azide
Precaution of Use:	This product contains Sodium azide: a POISONOUS AND HAZARDOUS SUBSTANCE which should be handled by trained staff only.
Storage:	-20 °C
Storage Comment:	Shipped at 4°C. Upon delivery aliquot and store at -20°C for one year. Avoid freeze/thaw cycles.
Expiry Date:	12 months

Images



Immunofluorescence

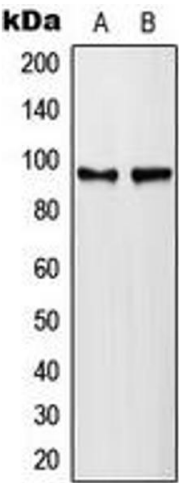
Image 1. Immunofluorescent analysis of PLA2G4A (pS505) staining in HeLa cells. Formalin-fixed cells were permeabilized with 0.1% Triton X-100 in TBS for 5-10 minutes and blocked with 3% BSA-PBS for 30 minutes at room temperature. Cells were probed with the primary antibody in 3% BSA-PBS and incubated overnight at 4 °C in a humidified chamber. Cells were washed with PBST and incubated with a DyLight 594-conjugated secondary



antibody (red) in PBS at room temperature in the dark. DAPI was used to stain the cell nuclei (blue).

Immunohistochemistry

Image 2. Immunohistochemical analysis of PLA2G4A (pS505) staining in human breast cancer formalin fixed paraffin embedded tissue section. The section was pre-treated using heat mediated antigen retrieval with sodium citrate buffer (pH 6.0). The section was then incubated with the antibody at room temperature and detected using an HRP conjugated compact polymer system. DAB was used as the chromogen. The section was then counterstained with haematoxylin and mounted with DPX.



Western Blotting

Image 3. Western blot analysis of PLA2G4A (pS505) expression in HeLa lambda protein phosphatase-treated (A), NIH3T3 lambda protein phosphatase-treated (B) whole cell lysates.