

Datasheet for ABIN7299410
anti-PKC zeta antibody (C-Term)

3 Images

[Go to Product page](#)

Overview

Quantity:	100 µL
Target:	PKC zeta (PRKCZ)
Binding Specificity:	C-Term
Reactivity:	Human, Mouse, Rat, Monkey, Rabbit, Zebrafish (Danio rerio)
Host:	Rabbit
Clonality:	Polyclonal
Conjugate:	This PKC zeta antibody is un-conjugated
Application:	Western Blotting (WB), Immunohistochemistry (IHC), Immunofluorescence (IF), Immunoprecipitation (IP), Immunochromatography (IC)

Product Details

Immunogen:	KLH-conjugated synthetic peptide encompassing a sequence within the C-term region of human PKC zeta.
Specificity:	Recognizes endogenous levels of PKC zeta protein.
Characteristics:	Rabbit polyclonal antibody to PKC zeta
Purification:	The antibody was purified by immunogen affinity chromatography.

Target Details

Target:	PKC zeta (PRKCZ)
Alternative Name:	PKC zeta (PRKCZ Products)

Target Details

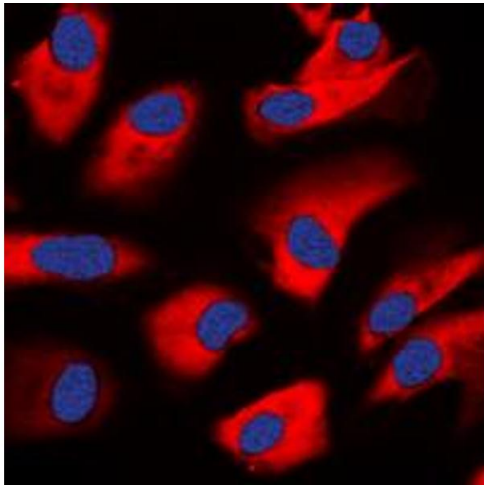
Background:	PKC2, Protein kinase C zeta type, nPKC-zeta
Gene ID:	5590, 18762, 25522
UniProt:	Q05513 , Q02956 , P09217
Pathways:	NF-kappaB Signaling , RTK Signaling , Myometrial Relaxation and Contraction , Regulation of Leukocyte Mediated Immunity , Positive Regulation of Immune Effector Process , Synaptic Membrane , Production of Molecular Mediator of Immune Response , CXCR4-mediated Signaling Events , Thromboxane A2 Receptor Signaling

Application Details

Application Notes:	WB (1:500 - 1:1000), IH (1:100 - 1:200), IF/IC (1:100 - 1:500), IP (1:10 - 1:100)
Restrictions:	For Research Use only

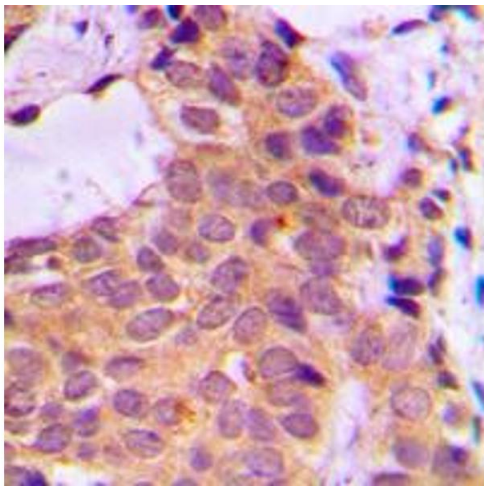
Handling

Format:	Liquid
Buffer:	Liquid in 0.42 % Potassium phosphate, 0.87 % Sodium chloride, pH 7.3, 30 % glycerol, and 0.01 % sodium azide.
Preservative:	Sodium azide
Precaution of Use:	This product contains Sodium azide: a POISONOUS AND HAZARDOUS SUBSTANCE which should be handled by trained staff only.
Storage:	-20 °C
Storage Comment:	Shipped at 4°C. Upon delivery aliquot and store at -20°C for one year. Avoid freeze/thaw cycles.
Expiry Date:	12 months



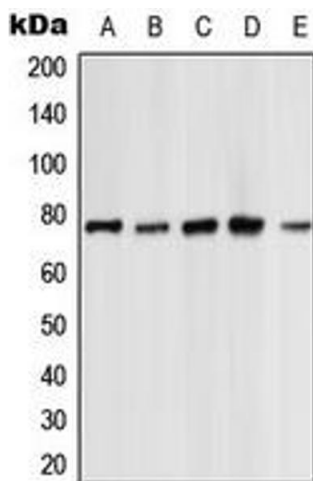
Immunofluorescence

Image 1. Immunofluorescent analysis of PKC zeta staining in HeLa cells. Formalin-fixed cells were permeabilized with 0.1% Triton X-100 in TBS for 5-10 minutes and blocked with 3% BSA-PBS for 30 minutes at room temperature. Cells were probed with the primary antibody in 3% BSA-PBS and incubated overnight at 4 °C in a humidified chamber. Cells were washed with PBST and incubated with a DyLight 594-conjugated secondary antibody (red) in PBS at room temperature in the dark. DAPI was used to stain the cell nuclei (blue).



Immunohistochemistry

Image 2. Immunohistochemical analysis of PKC zeta staining in human breast cancer formalin fixed paraffin embedded tissue section. The section was pre-treated using heat mediated antigen retrieval with sodium citrate buffer (pH 6.0). The section was then incubated with the antibody at room temperature and detected using an HRP conjugated compact polymer system. DAB was used as the chromogen. The section was then counterstained with haematoxylin and mounted with DPX.



Western Blotting

Image 3. Western blot analysis of PKC zeta expression in HeLa (A), NIH3T3 (B), PC12 (C), rat kidney (D), rat heart (E) whole cell lysates.