

Datasheet for ABIN7299450  
**anti-SFRS7 antibody (Center)**[Go to Product page](#)

## 2 Images

## Overview

Quantity:	100 µL
Target:	SFRS7
Binding Specificity:	Center
Reactivity:	Human, Mouse, Rat, Cow
Host:	Rabbit
Clonality:	Polyclonal
Conjugate:	This SFRS7 antibody is un-conjugated
Application:	Western Blotting (WB), Immunohistochemistry (IHC)

## Product Details

Immunogen:	KLH-conjugated synthetic peptide encompassing a sequence within the center region of human SRSF7.
Specificity:	Recognizes endogenous levels of SRSF7 protein.
Characteristics:	Rabbit polyclonal antibody to SRSF7
Purification:	The antibody was purified by immunogen affinity chromatography.

## Target Details

Target:	SFRS7
Alternative Name:	SRSF7 ( <a href="#">SFRS7 Products</a> )
Background:	SFRS7, Serine/arginine-rich splicing factor 7, Splicing factor 9G8, Splicing factor,

## Target Details

	arginine/serine-rich 7
Gene ID:	6432, 225027
UniProt:	<a href="#">Q16629</a> , <a href="#">Q8BL97</a>

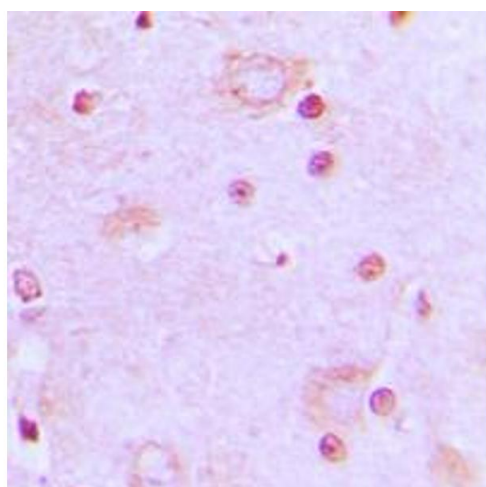
## Application Details

Application Notes:	WB (1:500 - 1:1000), IH (1:100 - 1:200)
Restrictions:	For Research Use only

## Handling

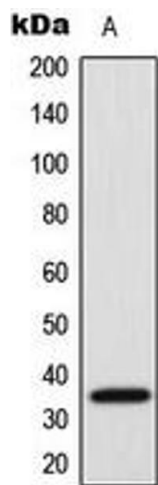
Format:	Liquid
Buffer:	Liquid in 0.42 % Potassium phosphate, 0.87 % Sodium chloride, pH 7.3, 30 % glycerol, and 0.01 % sodium azide.
Preservative:	Sodium azide
Precaution of Use:	This product contains Sodium azide: a POISONOUS AND HAZARDOUS SUBSTANCE which should be handled by trained staff only.
Storage:	-20 °C
Storage Comment:	Shipped at 4°C. Upon delivery aliquot and store at -20°C for one year. Avoid freeze/thaw cycles.
Expiry Date:	12 months

## Images



### Immunohistochemistry

**Image 1.** Immunohistochemical analysis of SRSF7 staining in human brain formalin fixed paraffin embedded tissue section. The section was pre-treated using heat mediated antigen retrieval with sodium citrate buffer (pH 6.0). The section was then incubated with the antibody at room temperature and detected using an HRP conjugated compact polymer system. DAB was used as the chromogen. The section was then counterstained with haematoxylin and mounted with DPX.



Western Blotting

**Image 2.** Western blot analysis of SRSF7 expression in HeLa (A) whole cell lysates.