

Datasheet for ABIN7299454  
**anti-SMARCC2 antibody (Center)**[Go to Product page](#)

## 2 Images

## Overview

Quantity:	100 µL
Target:	SMARCC2
Binding Specificity:	Center
Reactivity:	Human, Mouse, Rat
Host:	Rabbit
Clonality:	Polyclonal
Conjugate:	This SMARCC2 antibody is un-conjugated
Application:	Western Blotting (WB), Immunofluorescence (IF), Immunochromatography (IC)

## Product Details

Immunogen:	KLH-conjugated synthetic peptide encompassing a sequence within the center region of human BAF170.
Specificity:	Recognizes endogenous levels of BAF170 protein.
Characteristics:	Rabbit polyclonal antibody to BAF170
Purification:	The antibody was purified by immunogen affinity chromatography.

## Target Details

Target:	SMARCC2
Alternative Name:	BAF170 ( <a href="#">SMARCC2 Products</a> )
Background:	BAF170, SWI/SNF complex subunit SMARCC2, BRG1-associated factor 170, BAF170, SWI/SNF

## Target Details

	complex 170 kDa subunit, SWI/SNF-related matrix-associated actin-dependent regulator of chromatin subfamily C member 2
Gene ID:	6601, 68094
UniProt:	<a href="#">Q8TAQ2</a> , <a href="#">Q6PDG5</a>

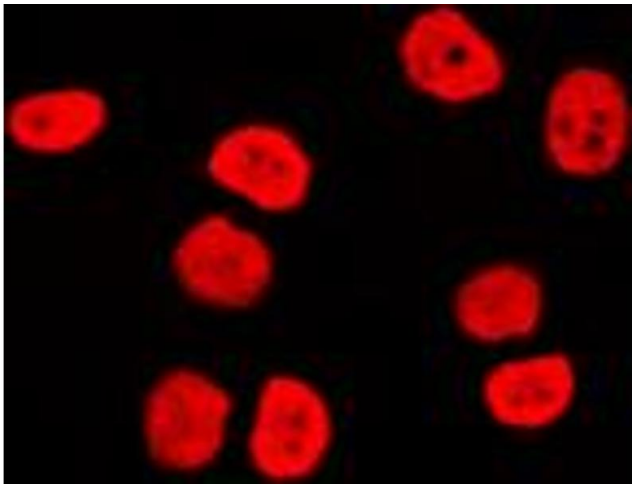
## Application Details

Application Notes:	WB (1:500 - 1:1000), IF/IC (1:100 - 1:500)
Restrictions:	For Research Use only

## Handling

Format:	Liquid
Buffer:	Liquid in 0.42 % Potassium phosphate, 0.87 % Sodium chloride, pH 7.3, 30 % glycerol, and 0.01 % sodium azide.
Preservative:	Sodium azide
Precaution of Use:	This product contains Sodium azide: a POISONOUS AND HAZARDOUS SUBSTANCE which should be handled by trained staff only.
Storage:	-20 °C
Storage Comment:	Shipped at 4°C. Upon delivery aliquot and store at -20°C for one year. Avoid freeze/thaw cycles.
Expiry Date:	12 months

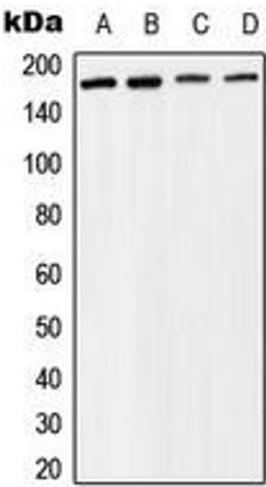
## Images



### Immunofluorescence

**Image 1.** Immunofluorescent analysis of BAF170 staining in Raji cells. Formalin-fixed cells were permeabilized with 0.1% Triton X-100 in TBS for 5-10 minutes and blocked with 3% BSA-PBS for 30 minutes at room temperature. Cells were probed with the primary antibody in 3% BSA-PBS and incubated overnight at 4 °C in a humidified chamber. Cells were washed with PBST and incubated with a DyLight 594-conjugated secondary antibody (red) in PBS at room

temperature in the dark. DAPI was used to stain the cell nuclei (blue).



Western Blotting

**Image 2.** Western blot analysis of BAF170 expression in Raji (A), MCF7 (B), mouse liver (C), rat liver (D) whole cell lysates.