

Datasheet for ABIN7299460
anti-STAT1 antibody (C-Term)

2 Images

[Go to Product page](#)

Overview

Quantity:	100 µL
Target:	STAT1
Binding Specificity:	C-Term
Reactivity:	Human, Mouse, Rat, Dog, Monkey, Cow, Pig, Chicken
Host:	Rabbit
Clonality:	Polyclonal
Conjugate:	This STAT1 antibody is un-conjugated
Application:	Western Blotting (WB), Immunohistochemistry (IHC), Immunoprecipitation (IP), Cleavage Under Targets and Tagmentation (CUT&Tag)

Product Details

Immunogen:	KLH-conjugated synthetic peptide encompassing a sequence within the C-term region of human STAT1.
Specificity:	Recognizes endogenous levels of STAT1 protein.
Characteristics:	Rabbit polyclonal antibody to STAT1
Purification:	The antibody was purified by immunogen affinity chromatography.

Target Details

Target:	STAT1
Alternative Name:	STAT1 (STAT1 Products)

Target Details

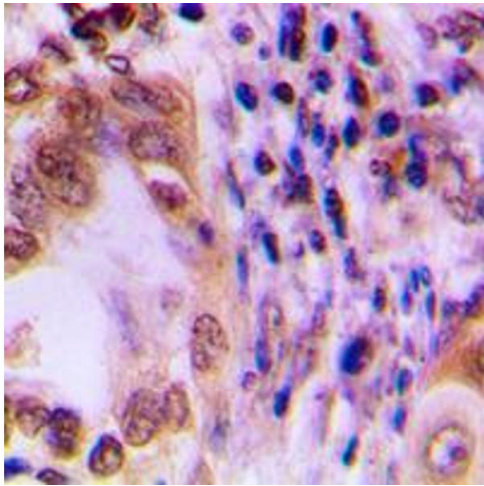
Background:	Signal transducer and activator of transcription 1-alpha/beta, Transcription factor ISGF-3 components p91/p84
Gene ID:	6772
UniProt:	P42224 , P42225
Pathways:	JAK-STAT Signaling , RTK Signaling , Interferon-gamma Pathway , Response to Growth Hormone Stimulus , Cellular Response to Molecule of Bacterial Origin , Positive Regulation of Endopeptidase Activity , Hepatitis C , CXCR4-mediated Signaling Events

Application Details

Application Notes:	WB (1:500 - 1:1000), IH (1:100 - 1:200), IP (1:10 - 1:100)
Restrictions:	For Research Use only

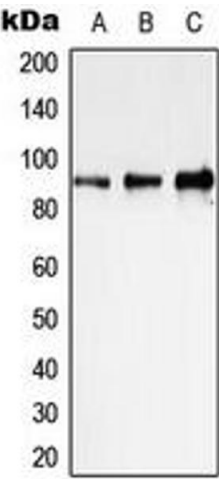
Handling

Format:	Liquid
Buffer:	Liquid in 0.42 % Potassium phosphate, 0.87 % Sodium chloride, pH 7.3, 30 % glycerol, and 0.01 % sodium azide.
Preservative:	Sodium azide
Precaution of Use:	This product contains Sodium azide: a POISONOUS AND HAZARDOUS SUBSTANCE which should be handled by trained staff only.
Storage:	-20 °C
Storage Comment:	Shipped at 4°C. Upon delivery aliquot and store at -20°C for one year. Avoid freeze/thaw cycles.
Expiry Date:	12 months



Immunohistochemistry

Image 1. Immunohistochemical analysis of STAT1 staining in human lung cancer formalin fixed paraffin embedded tissue section. The section was pre-treated using heat mediated antigen retrieval with sodium citrate buffer (pH 6.0). The section was then incubated with the antibody at room temperature and detected using an HRP conjugated compact polymer system. DAB was used as the chromogen. The section was then counterstained with haematoxylin and mounted with DPX.



Western Blotting

Image 2. Western blot analysis of STAT1 expression in HeLa (A), NIH3T3 (B), PC12 (C) whole cell lysates.