



[Go to Product page](#)

Datasheet for ABIN7299486

anti-TFAP2C antibody (C-Term)

2 Images

Overview

Quantity:	100 µL
Target:	TFAP2C
Binding Specificity:	C-Term
Reactivity:	Human, Mouse, Rat, Monkey
Host:	Rabbit
Clonality:	Polyclonal
Conjugate:	This TFAP2C antibody is un-conjugated
Application:	Western Blotting (WB), Immunohistochemistry (IHC)

Product Details

Immunogen:	KLH-conjugated synthetic peptide encompassing a sequence within the C-term region of human AP2 gamma.
Specificity:	Recognizes endogenous levels of AP2 gamma protein.
Characteristics:	Rabbit polyclonal antibody to AP2 gamma
Purification:	The antibody was purified by immunogen affinity chromatography.

Target Details

Target:	TFAP2C
Alternative Name:	AP2 gamma (TFAP2C Products)
Background:	Transcription factor AP-2 gamma, AP2-gamma, Activating enhancer-binding protein 2 gamma,

Target Details

Transcription factor ERF-1

Gene ID: 7022, 21420

UniProt: [Q92754](#), [Q61312](#)

Pathways: [Stem Cell Maintenance](#)

Application Details

Application Notes: WB (1:500 - 1:1000), IH (1:100 - 1:200)

Restrictions: For Research Use only

Handling

Format: Liquid

Buffer: Liquid in 0.42 % Potassium phosphate, 0.87 % Sodium chloride, pH 7.3, 30 % glycerol, and 0.01 % sodium azide.

Preservative: Sodium azide

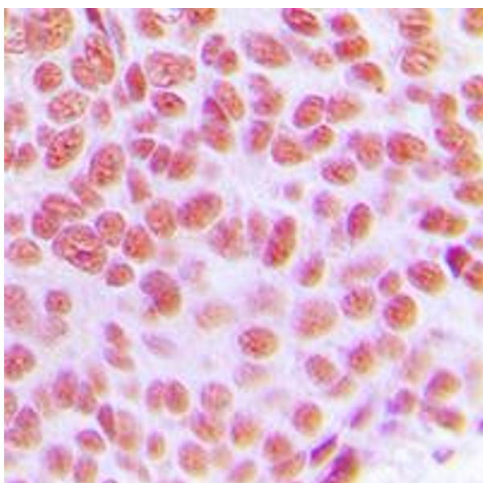
Precaution of Use: This product contains Sodium azide: a POISONOUS AND HAZARDOUS SUBSTANCE which should be handled by trained staff only.

Storage: -20 °C

Storage Comment: Shipped at 4°C. Upon delivery aliquot and store at -20°C for one year. Avoid freeze/thaw cycles.

Expiry Date: 12 months

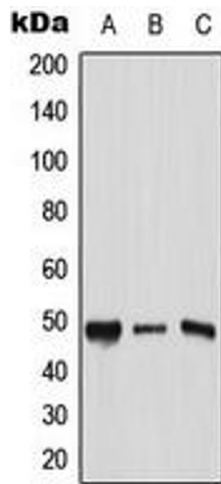
Images



Immunohistochemistry

Image 1. Immunohistochemical analysis of AP2 gamma staining in human breast cancer formalin fixed paraffin embedded tissue section. The section was pre-treated using heat mediated antigen retrieval with sodium citrate buffer (pH 6.0). The section was then incubated with the antibody at room temperature and detected using an HRP conjugated compact polymer system. DAB was used as the chromogen. The section was then counterstained with

haematoxylin and mounted with DPX.



Western Blotting

Image 2. Western blot analysis of AP2 gamma expression in HeLa (A), Raw264.7 (B), PC12 (C) whole cell lysates.