

Datasheet for ABIN7299522
anti-14-3-3 eta antibody (Center)

3 Images

[Go to Product page](#)

Overview

Quantity:	100 µL
Target:	14-3-3 eta (YWHAH)
Binding Specificity:	Center
Reactivity:	Human, Mouse, Rat, Monkey, Cow
Host:	Rabbit
Clonality:	Polyclonal
Conjugate:	This 14-3-3 eta antibody is un-conjugated
Application:	Western Blotting (WB), Immunofluorescence (IF), Immunohistochemistry (IHC), Immunochromatography (IC)

Product Details

Immunogen:	KLH-conjugated synthetic peptide encompassing a sequence within the center region of human 14-3-3 eta.
Specificity:	Recognizes endogenous levels of 14-3-3 eta protein.
Characteristics:	Rabbit polyclonal antibody to 14-3-3 eta
Purification:	The antibody was purified by immunogen affinity chromatography.

Target Details

Target:	14-3-3 eta (YWHAH)
Alternative Name:	14-3-3 eta (YWHAH Products)

Target Details

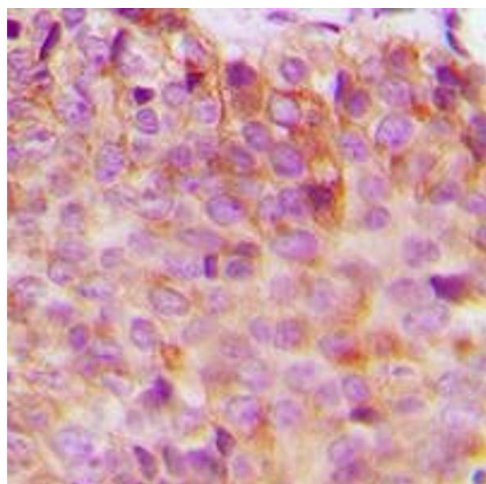
Background:	YWHA1, 14-3-3 protein eta, Protein AS1
Gene ID:	7533, 22629, 25576
UniProt:	Q04917 , P68510 , P68511
Pathways:	Intracellular Steroid Hormone Receptor Signaling Pathway , C21-Steroid Hormone Metabolic Process , Myometrial Relaxation and Contraction

Application Details

Application Notes:	WB (1:500 - 1:1000), IH (1:100 - 1:200), IF/IC (1:100 - 1:500)
Restrictions:	For Research Use only

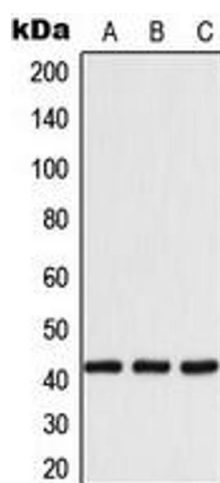
Handling

Format:	Liquid
Buffer:	Liquid in 0.42 % Potassium phosphate, 0.87 % Sodium chloride, pH 7.3, 30 % glycerol, and 0.01 % sodium azide.
Preservative:	Sodium azide
Precaution of Use:	This product contains Sodium azide: a POISONOUS AND HAZARDOUS SUBSTANCE which should be handled by trained staff only.
Storage:	-20 °C
Storage Comment:	Shipped at 4°C. Upon delivery aliquot and store at -20°C for one year. Avoid freeze/thaw cycles.
Expiry Date:	12 months



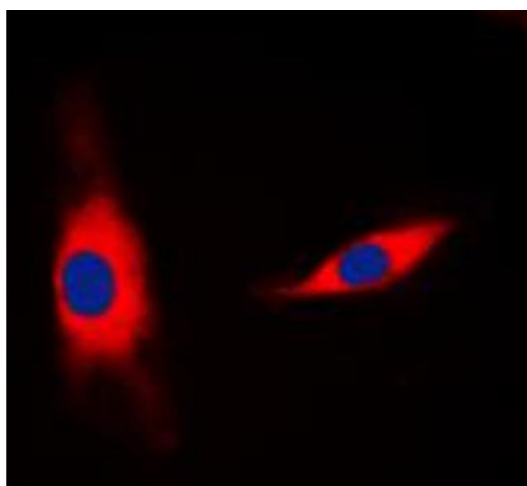
Immunohistochemistry

Image 1. Immunohistochemical analysis of 14-3-3 eta staining in human breast cancer formalin fixed paraffin embedded tissue section. The section was pre-treated using heat mediated antigen retrieval with sodium citrate buffer (pH 6.0). The section was then incubated with the antibody at room temperature and detected using an HRP conjugated compact polymer system. DAB was used as the chromogen. The section was then counterstained with haematoxylin and mounted with DPX.



Western Blotting

Image 2. Western blot analysis of 14-3-3 eta expression in MCF7 (A), SP2/O (B), H9C2 (C) whole cell lysates.



Immunofluorescence

Image 3. Immunofluorescent analysis of 14-3-3 eta staining in MCF7 cells. Formalin-fixed cells were permeabilized with 0.1% Triton X-100 in TBS for 5-10 minutes and blocked with 3% BSA-PBS for 30 minutes at room temperature. Cells were probed with the primary antibody in 3% BSA-PBS and incubated overnight at 4 °C in a humidified chamber. Cells were washed with PBST and incubated with a DyLight 594-conjugated secondary antibody (red) in PBS at room temperature in the dark. DAPI was used to stain the cell nuclei (blue).