

Datasheet for ABIN7299524

anti-14-3-3 zeta antibody (C-Term)**3** Images[Go to Product page](#)

Overview

Quantity:	100 µL
Target:	14-3-3 zeta (YWHAZ)
Binding Specificity:	C-Term
Reactivity:	Human, Mouse, Rat, Cow, Sheep, Chicken, Pig
Host:	Rabbit
Clonality:	Polyclonal
Conjugate:	This 14-3-3 zeta antibody is un-conjugated
Application:	Western Blotting (WB), Immunohistochemistry (IHC), Immunofluorescence (IF), Immunochromatography (IC)

Product Details

Immunogen:	KLH-conjugated synthetic peptide encompassing a sequence within the C-term region of human 14-3-3 zeta.
Specificity:	Recognizes endogenous levels of 14-3-3 zeta protein.
Characteristics:	Rabbit polyclonal antibody to 14-3-3 zeta
Purification:	The antibody was purified by immunogen affinity chromatography.

Target Details

Target:	14-3-3 zeta (YWHAZ)
Alternative Name:	14-3-3 zeta (YWHAZ Products)

Target Details

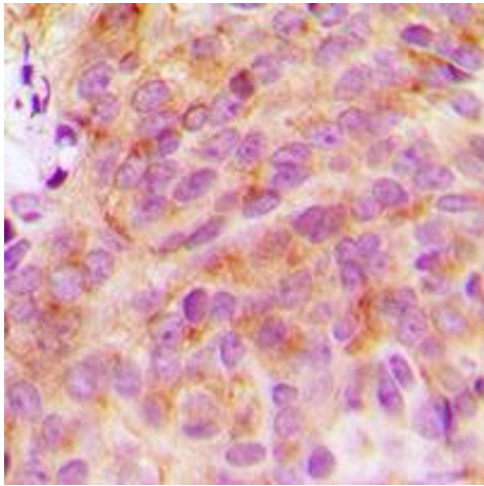
Background:	14-3-3 protein zeta/delta, Protein kinase C inhibitor protein 1, KCIP-1
Gene ID:	7534, 22631, 25578
UniProt:	P63104 , P63101 , P63102
Pathways:	Apoptosis , Hormone Transport , Myometrial Relaxation and Contraction , Regulation of Leukocyte Mediated Immunity , Positive Regulation of Immune Effector Process , Synaptic Membrane , Production of Molecular Mediator of Immune Response , Maintenance of Protein Location

Application Details

Application Notes:	WB (1:500 - 1:1000), IH (1:100 - 1:200), IF/IC (1:100 - 1:500)
Restrictions:	For Research Use only

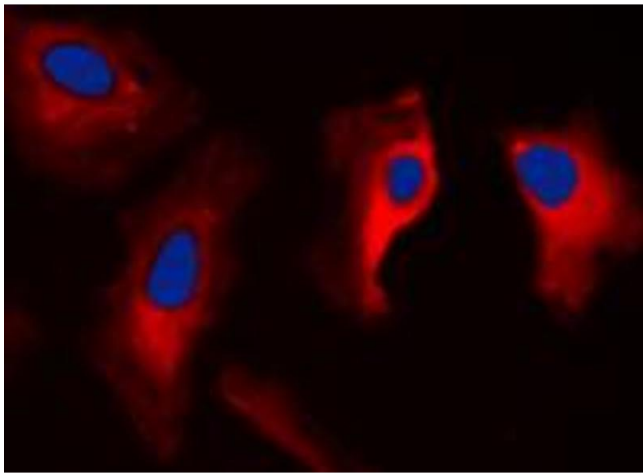
Handling

Format:	Liquid
Buffer:	Liquid in 0.42 % Potassium phosphate, 0.87 % Sodium chloride, pH 7.3, 30 % glycerol, and 0.01 % sodium azide.
Preservative:	Sodium azide
Precaution of Use:	This product contains Sodium azide: a POISONOUS AND HAZARDOUS SUBSTANCE which should be handled by trained staff only.
Storage:	-20 °C
Storage Comment:	Shipped at 4°C. Upon delivery aliquot and store at -20°C for one year. Avoid freeze/thaw cycles.
Expiry Date:	12 months



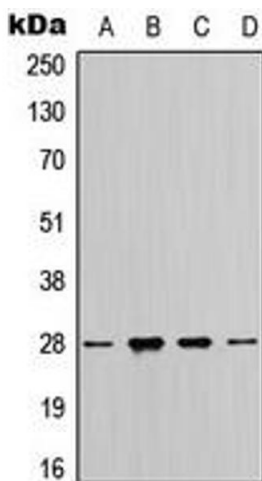
Immunohistochemistry

Image 1. Immunohistochemical analysis of 14-3-3 zeta staining in human breast cancer formalin fixed paraffin embedded tissue section. The section was pre-treated using heat mediated antigen retrieval with sodium citrate buffer (pH 6.0). The section was then incubated with the antibody at room temperature and detected using an HRP conjugated compact polymer system. DAB was used as the chromogen. The section was then counterstained with haematoxylin and mounted with DPX.



Immunofluorescence

Image 2. Immunofluorescent analysis of 14-3-3 zeta staining in MCF7 cells. Formalin-fixed cells were permeabilized with 0.1% Triton X-100 in TBS for 5-10 minutes and blocked with 3% BSA-PBS for 30 minutes at room temperature. Cells were probed with the primary antibody in 3% BSA-PBS and incubated overnight at 4 °C in a humidified chamber. Cells were washed with PBST and incubated with a DyLight 594-conjugated secondary antibody (red) in PBS at room temperature in the dark. DAPI was used to stain the cell nuclei (blue).



Western Blotting

Image 3. Western blot analysis of 14-3-3 zeta expression in MCF7 (A), HeLa (B), SP2/O (C), H9C2 (D) whole cell lysates.