



[Go to Product page](#)

Datasheet for ABIN7299548  
**anti-AIM2 antibody (Center)**

3 Images

### Overview

Quantity:	100 µL
Target:	AIM2
Binding Specificity:	Center
Reactivity:	Human
Host:	Rabbit
Clonality:	Polyclonal
Conjugate:	This AIM2 antibody is un-conjugated
Application:	Western Blotting (WB), Immunohistochemistry (IHC), Immunofluorescence (IF), Immunochromatography (IC)

### Product Details

Immunogen:	KLH-conjugated synthetic peptide encompassing a sequence within the center region of human AIM2.
Specificity:	Recognizes endogenous levels of AIM2 protein.
Characteristics:	Rabbit polyclonal antibody to AIM2
Purification:	The antibody was purified by immunogen affinity chromatography.

### Target Details

Target:	AIM2
Alternative Name:	AIM2 ( <a href="#">AIM2 Products</a> )

## Target Details

---

Background:	Interferon-inducible protein AIM2, Absent in melanoma 2
Gene ID:	9447
UniProt:	<a href="#">O14862</a>
Pathways:	<a href="#">Activation of Innate immune Response</a> , <a href="#">Positive Regulation of Endopeptidase Activity</a> , <a href="#">Inflammasome</a>

## Application Details

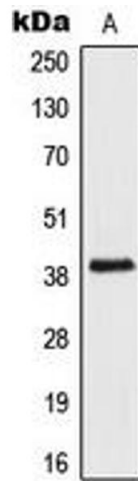
---

Application Notes:	WB (1:500 - 1:1000), IH (1:100 - 1:200), IF/IC (1:100 - 1:500)
Restrictions:	For Research Use only

## Handling

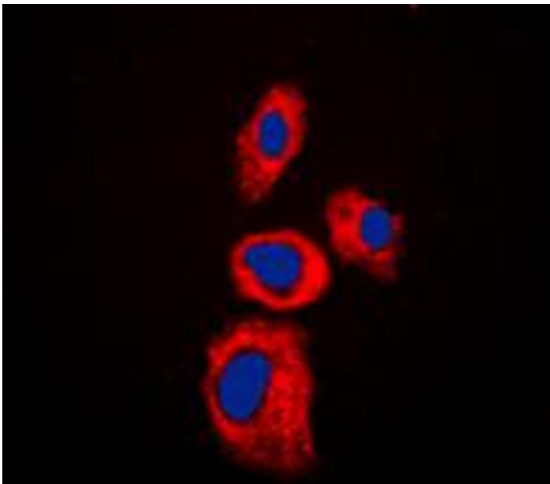
---

Format:	Liquid
Buffer:	Liquid in 0.42 % Potassium phosphate, 0.87 % Sodium chloride, pH 7.3, 30 % glycerol, and 0.01 % sodium azide.
Preservative:	Sodium azide
Precaution of Use:	This product contains Sodium azide: a POISONOUS AND HAZARDOUS SUBSTANCE which should be handled by trained staff only.
Storage:	-20 °C
Storage Comment:	Shipped at 4°C. Upon delivery aliquot and store at -20°C for one year. Avoid freeze/thaw cycles.
Expiry Date:	12 months



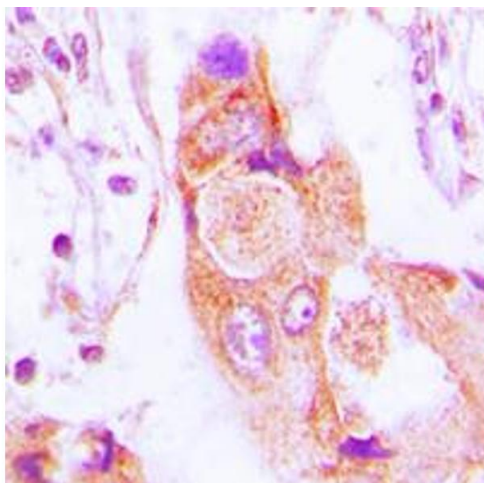
### Western Blotting

**Image 1.** Western blot analysis of AIM2 expression in Jurkat (A) whole cell lysates.



### Immunofluorescence

**Image 2.** Immunofluorescent analysis of AIM2 staining in Jurkat cells. Formalin-fixed cells were permeabilized with 0.1% Triton X-100 in TBS for 5-10 minutes and blocked with 3% BSA-PBS for 30 minutes at room temperature. Cells were probed with the primary antibody in 3% BSA-PBS and incubated overnight at 4 °C in a humidified chamber. Cells were washed with PBST and incubated with a DyLight 594-conjugated secondary antibody (red) in PBS at room temperature in the dark. DAPI was used to stain the cell nuclei (blue).



### Immunohistochemistry

**Image 3.** Immunohistochemical analysis of AIM2 staining in human lung cancer formalin fixed paraffin embedded tissue section. The section was pre-treated using heat mediated antigen retrieval with sodium citrate buffer (pH 6.0). The section was then incubated with the antibody at room temperature and detected using an HRP conjugated compact polymer system. DAB was used as the chromogen. The section was then counterstained with haematoxylin and mounted with DPX.