

Datasheet for ABIN7299588
anti-14-3-3 theta antibody (C-Term)

3 Images

[Go to Product page](#)

Overview

| | |
|----------------------|--|
| Quantity: | 100 µL |
| Target: | 14-3-3 theta (YWHAQ) |
| Binding Specificity: | C-Term |
| Reactivity: | Human, Mouse, Rat, Cow, Chicken, Pig, Rabbit |
| Host: | Rabbit |
| Clonality: | Polyclonal |
| Conjugate: | This 14-3-3 theta antibody is un-conjugated |
| Application: | Western Blotting (WB), Immunohistochemistry (IHC), Immunofluorescence (IF), Immunochromatography (IC) |

Product Details

| | |
|------------------|--|
| Immunogen: | KLH-conjugated synthetic peptide encompassing a sequence within the C-term region of human 14-3-3 theta/tau. |
| Specificity: | Recognizes endogenous levels of 14-3-3 theta/tau protein. |
| Characteristics: | Rabbit polyclonal antibody to 14-3-3 theta/tau |
| Purification: | The antibody was purified by immunogen affinity chromatography. |

Target Details

| | |
|-------------------|---|
| Target: | 14-3-3 theta (YWHAQ) |
| Alternative Name: | 14-3-3 theta/tau (YWHAQ Products) |

Target Details

| | |
|-------------|---|
| Background: | 14-3-3 protein theta, 14-3-3 protein T-cell, 14-3-3 protein tau, Protein HS1 |
| Gene ID: | 10971, 102634437, 22630 |
| UniProt: | P27348 , P68254 , P68255 |
| Pathways: | Apoptosis , Myometrial Relaxation and Contraction |

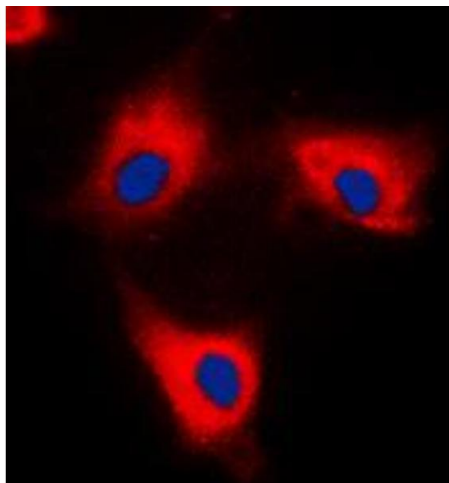
Application Details

| | |
|--------------------|--|
| Application Notes: | WB (1:500 - 1:1000), IH (1:100 - 1:200), IF/IC (1:100 - 1:500) |
| Restrictions: | For Research Use only |

Handling

| | |
|--------------------|--|
| Format: | Liquid |
| Buffer: | Liquid in 0.42 % Potassium phosphate, 0.87 % Sodium chloride, pH 7.3, 30 % glycerol, and 0.01 % sodium azide. |
| Preservative: | Sodium azide |
| Precaution of Use: | This product contains Sodium azide: a POISONOUS AND HAZARDOUS SUBSTANCE which should be handled by trained staff only. |
| Storage: | -20 °C |
| Storage Comment: | Shipped at 4°C. Upon delivery aliquot and store at -20°C for one year. Avoid freeze/thaw cycles. |
| Expiry Date: | 12 months |

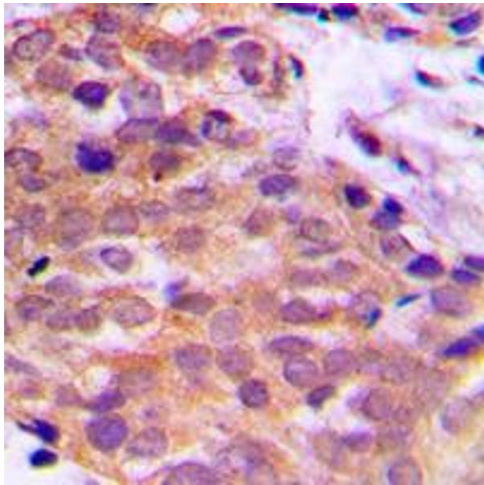
Images



Immunofluorescence

Image 1. Immunofluorescent analysis of 14-3-3 theta/tau staining in HeLa cells. Formalin-fixed cells were permeabilized with 0.1% Triton X-100 in TBS for 5-10 minutes and blocked with 3% BSA-PBS for 30 minutes at room temperature. Cells were probed with the primary antibody in 3% BSA-PBS and incubated overnight at 4 °C in a humidified chamber. Cells were washed with PBST and incubated with a DyLight 594-conjugated secondary

antibody (red) in PBS at room temperature in the dark. DAPI was used to stain the cell nuclei (blue).



Immunohistochemistry

Image 2. Immunohistochemical analysis of 14-3-3 theta/tau staining in human prostate cancer formalin fixed paraffin embedded tissue section. The section was pre-treated using heat mediated antigen retrieval with sodium citrate buffer (pH 6.0). The section was then incubated with the antibody at room temperature and detected using an HRP conjugated compact polymer system. DAB was used as the chromogen. The section was then counterstained with haematoxylin and mounted with DPX.

Western Blotting

Image 3. Western blot analysis of 14-3-3 theta/tau expression in HeLa (A), SP2/0 (B), H9C2 (C) whole cell lysates.

