

Datasheet for ABIN7299612
anti-SIN3B antibody (Center)[Go to Product page](#)

2 Images

Overview

Quantity:	100 µL
Target:	SIN3B
Binding Specificity:	Center
Reactivity:	Human, Mouse, Monkey
Host:	Rabbit
Clonality:	Polyclonal
Conjugate:	This SIN3B antibody is un-conjugated
Application:	Western Blotting (WB), Immunofluorescence (IF), Immunochromatography (IC)

Product Details

Immunogen:	KLH-conjugated synthetic peptide encompassing a sequence within the center region of human SIN3B.
Specificity:	Recognizes endogenous levels of SIN3B protein.
Characteristics:	Rabbit polyclonal antibody to SIN3B
Purification:	The antibody was purified by immunogen affinity chromatography.

Target Details

Target:	SIN3B
Alternative Name:	SIN3B (SIN3B Products)
Background:	KIAA0700, Paired amphipathic helix protein Sin3b, Histone deacetylase complex subunit Sin3b,

Target Details

Transcriptional corepressor Sin3b

Gene ID: 23309, 20467

UniProt: [O75182](#), [Q62141](#)

Application Details

Application Notes: WB (1:500 - 1:1000), IF/IC (1:100 - 1:500)

Restrictions: For Research Use only

Handling

Format: Liquid

Buffer: Liquid in 0.42 % Potassium phosphate, 0.87 % Sodium chloride, pH 7.3, 30 % glycerol, and 0.01 % sodium azide.

Preservative: Sodium azide

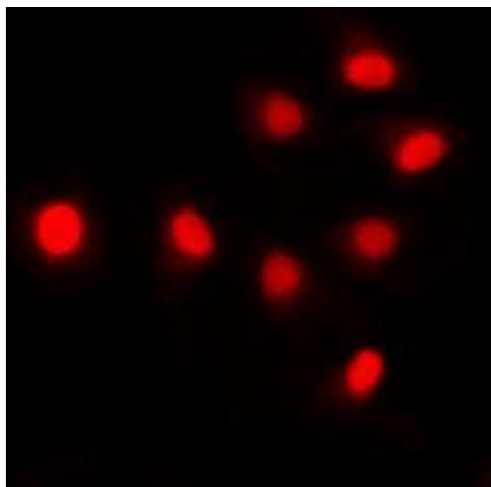
Precaution of Use: This product contains Sodium azide: a POISONOUS AND HAZARDOUS SUBSTANCE which should be handled by trained staff only.

Storage: -20 °C

Storage Comment: Shipped at 4°C. Upon delivery aliquot and store at -20°C for one year. Avoid freeze/thaw cycles.

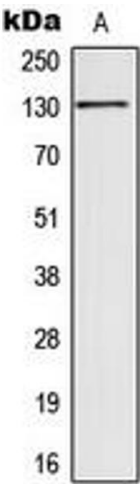
Expiry Date: 12 months

Images



Immunofluorescence

Image 1. Immunofluorescent analysis of SIN3B staining in HCT116 cells. Formalin-fixed cells were permeabilized with 0.1% Triton X-100 in TBS for 5-10 minutes and blocked with 3% BSA-PBS for 30 minutes at room temperature. Cells were probed with the primary antibody in 3% BSA-PBS and incubated overnight at 4 °C in a humidified chamber. Cells were washed with PBST and incubated with a DyLight 594-conjugated secondary antibody (red) in PBS at room temperature in the dark. DAPI was used to stain the cell



nuclei (blue).

Western Blotting

Image 2. Western blot analysis of SIN3B expression in HCT116 (A) whole cell lysates.