

Datasheet for ABIN7299628  
**anti-MRPL13 antibody (C-Term)**[Go to Product page](#)

## 2 Images

## Overview

Quantity:	100 µL
Target:	MRPL13
Binding Specificity:	C-Term
Reactivity:	Human, Monkey
Host:	Rabbit
Clonality:	Polyclonal
Conjugate:	This MRPL13 antibody is un-conjugated
Application:	Western Blotting (WB), Immunohistochemistry (IHC)

## Product Details

Immunogen:	KLH-conjugated synthetic peptide encompassing a sequence within the C-term region of human MRPL13.
Specificity:	Recognizes endogenous levels of MRPL13 protein.
Characteristics:	Rabbit polyclonal antibody to MRPL13
Purification:	The antibody was purified by immunogen affinity chromatography.

## Target Details

Target:	MRPL13
Alternative Name:	MRPL13 ( <a href="#">MRPL13 Products</a> )
Background:	39S ribosomal protein L13, mitochondrial, L13mt, MRP-L13

Target Details

Gene ID:	28998
UniProt:	<a href="#">Q9BYD1</a>

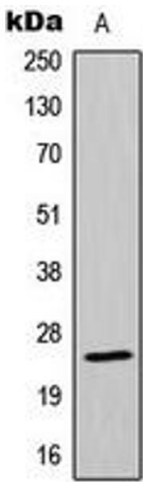
Application Details

Application Notes:	WB (1:500 - 1:1000), IH (1:100 - 1:200)
Restrictions:	For Research Use only

Handling

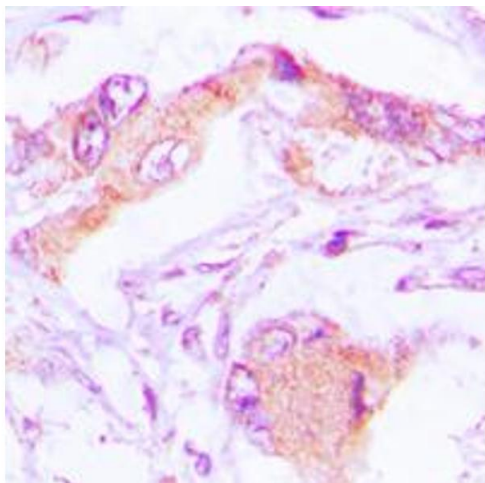
Format:	Liquid
Buffer:	Liquid in 0.42 % Potassium phosphate, 0.87 % Sodium chloride, pH 7.3, 30 % glycerol, and 0.01 % sodium azide.
Preservative:	Sodium azide
Precaution of Use:	This product contains Sodium azide: a POISONOUS AND HAZARDOUS SUBSTANCE which should be handled by trained staff only.
Storage:	-20 °C
Storage Comment:	Shipped at 4°C. Upon delivery aliquot and store at -20°C for one year. Avoid freeze/thaw cycles.
Expiry Date:	12 months

Images



Western Blotting

**Image 1.** Western blot analysis of MRPL13 expression in MCF7 (A) whole cell lysates.



#### Immunohistochemistry

**Image 2.** Immunohistochemical analysis of MRPL13 staining in human lung formalin fixed paraffin embedded tissue section. The section was pre-treated using heat mediated antigen retrieval with sodium citrate buffer (pH 6.0). The section was then incubated with the antibody at room temperature and detected using an HRP conjugated compact polymer system. DAB was used as the chromogen. The section was then counterstained with haematoxylin and mounted with DPX.