

Datasheet for ABIN7299630
anti-TRA2A antibody (C-Term)[Go to Product page](#)

2 Images

Overview

Quantity:	100 µL
Target:	TRA2A
Binding Specificity:	C-Term
Reactivity:	Human, Mouse, Rat, Cow, Pig, Monkey
Host:	Rabbit
Clonality:	Polyclonal
Conjugate:	This TRA2A antibody is un-conjugated
Application:	Western Blotting (WB), Immunofluorescence (IF), Immunochromatography (IC)

Product Details

Immunogen:	KLH-conjugated synthetic peptide encompassing a sequence within the C-term region of human TRA2A.
Specificity:	Recognizes endogenous levels of TRA2A protein.
Characteristics:	Rabbit polyclonal antibody to TRA2A
Purification:	The antibody was purified by immunogen affinity chromatography.

Target Details

Target:	TRA2A
Alternative Name:	TRA2A (TRA2A Products)
Background:	Transformer-2 protein homolog alpha, TRA-2 alpha, TRA2-alpha, Transformer-2 protein

Target Details

	homolog A
Gene ID:	29896
UniProt:	Q13595 , Q6PFR5

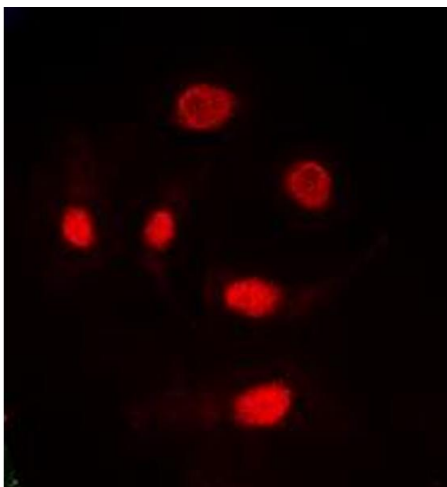
Application Details

Application Notes:	WB (1:500 - 1:1000), IF/IC (1:100 - 1:500)
Restrictions:	For Research Use only

Handling

Format:	Liquid
Buffer:	Liquid in 0.42 % Potassium phosphate, 0.87 % Sodium chloride, pH 7.3, 30 % glycerol, and 0.01 % sodium azide.
Preservative:	Sodium azide
Precaution of Use:	This product contains Sodium azide: a POISONOUS AND HAZARDOUS SUBSTANCE which should be handled by trained staff only.
Storage:	-20 °C
Storage Comment:	Shipped at 4°C. Upon delivery aliquot and store at -20°C for one year. Avoid freeze/thaw cycles.
Expiry Date:	12 months

Images



Immunofluorescence

Image 1. Immunofluorescent analysis of TRA2A staining in HeLa cells. Formalin-fixed cells were permeabilized with 0.1% Triton X-100 in TBS for 5-10 minutes and blocked with 3% BSA-PBS for 30 minutes at room temperature. Cells were probed with the primary antibody in 3% BSA-PBS and incubated overnight at 4 °C in a humidified chamber. Cells were washed with PBST and incubated with a DyLight 594-conjugated secondary antibody (red) in PBS at room temperature in the dark. DAPI was used to stain the cell

nuclei (blue).

Western Blotting

Image 2. Western blot analysis of TRA2A expression in HeLa (A), Jurkat (B), 129Sv (C) whole cell lysates.

