

Datasheet for ABIN7299634
anti-PNPLA8 antibody (C-Term)



[Go to Product page](#)

1 Image

Overview

Quantity:	100 µL
Target:	PNPLA8
Binding Specificity:	C-Term
Reactivity:	Human, Rat, Rabbit, Monkey
Host:	Rabbit
Clonality:	Polyclonal
Conjugate:	This PNPLA8 antibody is un-conjugated
Application:	Western Blotting (WB)

Product Details

Immunogen:	KLH-conjugated synthetic peptide encompassing a sequence within the C-term region of human PNPLA8.
Specificity:	Recognizes endogenous levels of PNPLA8 protein.
Characteristics:	Rabbit polyclonal antibody to PNPLA8
Purification:	The antibody was purified by immunogen affinity chromatography.

Target Details

Target:	PNPLA8
Alternative Name:	PNPLA8 (PNPLA8 Products)
Background:	IPLA22, IPLA2G, Calcium-independent phospholipase A2-gamma, Intracellular membrane-

Target Details

	associated calcium-independent phospholipase A2 gamma, iPLA2-gamma, PNPLA-gamma, Patatin-like phospholipase domain-containing protein 8, iPLA2-2
Gene ID:	50640
UniProt:	Q9NP80

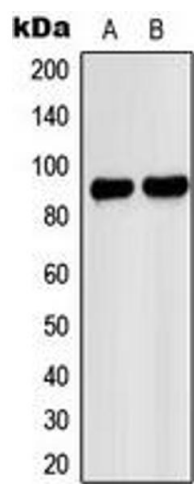
Application Details

Application Notes:	WB (1:500 - 1:1000)
Restrictions:	For Research Use only

Handling

Format:	Liquid
Buffer:	Liquid in 0.42 % Potassium phosphate, 0.87 % Sodium chloride, pH 7.3, 30 % glycerol, and 0.01 % sodium azide.
Preservative:	Sodium azide
Precaution of Use:	This product contains Sodium azide: a POISONOUS AND HAZARDOUS SUBSTANCE which should be handled by trained staff only.
Storage:	-20 °C
Storage Comment:	Shipped at 4°C. Upon delivery aliquot and store at -20°C for one year. Avoid freeze/thaw cycles.
Expiry Date:	12 months

Images



Western Blotting

Image 1. Western blot analysis of PNPLA8 expression in A549 (A), HeLa (B) whole cell lysates.