

Datasheet for ABIN7299646  
**anti-CSNK1G1 antibody (N-Term)**

## 3 Images

[Go to Product page](#)

## Overview

Quantity:	100 µL
Target:	CSNK1G1
Binding Specificity:	N-Term
Reactivity:	Human, Mouse, Rat, Cow, Monkey
Host:	Rabbit
Clonality:	Polyclonal
Conjugate:	This CSNK1G1 antibody is un-conjugated
Application:	Western Blotting (WB), Immunohistochemistry (IHC), Immunofluorescence (IF), Immunochromatography (IC)

## Product Details

Immunogen:	KLH-conjugated synthetic peptide encompassing a sequence within the N-term region of human CK1 gamma 1.
Specificity:	Recognizes endogenous levels of CK1 gamma 1 protein.
Characteristics:	Rabbit polyclonal antibody to CK1 gamma 1
Purification:	The antibody was purified by immunogen affinity chromatography.

## Target Details

Target:	CSNK1G1
Alternative Name:	CK1 gamma 1 ( <a href="#">CSNK1G1 Products</a> )

## Target Details

Background: Casein kinase I isoform gamma-1, CKI-gamma 1

Gene ID: 53944, 214897, 64086

UniProt: [Q9HCP0](#), [Q8BTH8](#), [Q62761](#)

Pathways: [Hedgehog Signaling](#)

## Application Details

Application Notes: WB (1:500 - 1:1000), IH (1:100 - 1:200), IF/IC (1:100 - 1:500)

Restrictions: For Research Use only

## Handling

Format: Liquid

Buffer: Liquid in 0.42 % Potassium phosphate, 0.87 % Sodium chloride, pH 7.3, 30 % glycerol, and 0.01 % sodium azide.

Preservative: Sodium azide

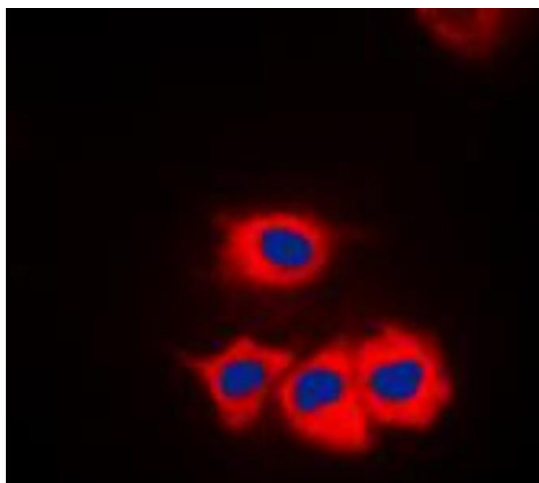
Precaution of Use: This product contains Sodium azide: a POISONOUS AND HAZARDOUS SUBSTANCE which should be handled by trained staff only.

Storage: -20 °C

Storage Comment: Shipped at 4°C. Upon delivery aliquot and store at -20°C for one year. Avoid freeze/thaw cycles.

Expiry Date: 12 months

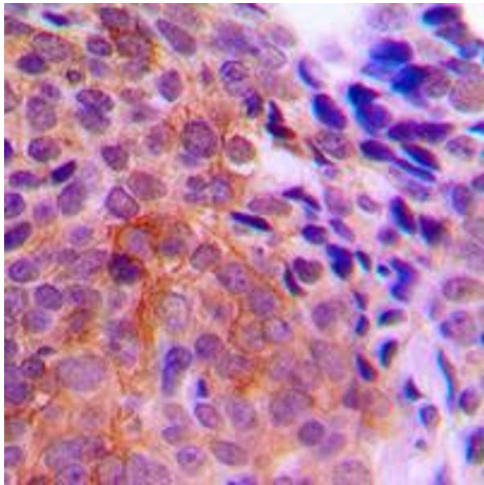
## Images



### Immunofluorescence

**Image 1.** Immunofluorescent analysis of CK1 gamma 1 staining in Jurkat cells. Formalin-fixed cells were permeabilized with 0.1% Triton X-100 in TBS for 5-10 minutes and blocked with 3% BSA-PBS for 30 minutes at room temperature. Cells were probed with the primary antibody in 3% BSA-PBS and incubated overnight at 4 °C in a humidified chamber. Cells were washed with PBST and incubated with a DyLight 594-conjugated secondary

antibody (red) in PBS at room temperature in the dark. DAPI was used to stain the cell nuclei (blue).



Immunohistochemistry

**Image 2.** Immunohistochemical analysis of CK1 gamma 1 staining in human breast cancer formalin fixed paraffin embedded tissue section. The section was pre-treated using heat mediated antigen retrieval with sodium citrate buffer (pH 6.0). The section was then incubated with the antibody at room temperature and detected using an HRP conjugated compact polymer system. DAB was used as the chromogen. The section was then counterstained with haematoxylin and mounted with DPX.

Western Blotting

**Image 3.** Western blot analysis of CK1 gamma 1 expression in Jurkat (A), NIH3T3 (B), H9C2 (C) whole cell lysates.

