



[Go to Product page](#)

Datasheet for ABIN7299662

## anti-SH3GLB2 antibody (Center)

### 2 Images

#### Overview

Quantity:	100 µL
Target:	SH3GLB2
Binding Specificity:	Center
Reactivity:	Human, Mouse, Rat, Cow
Host:	Rabbit
Clonality:	Polyclonal
Conjugate:	This SH3GLB2 antibody is un-conjugated
Application:	Western Blotting (WB), Immunohistochemistry (IHC)

#### Product Details

Immunogen:	KLH-conjugated synthetic peptide encompassing a sequence within the center region of human SH3GLB2.
Specificity:	Recognizes endogenous levels of SH3GLB2 protein.
Characteristics:	Rabbit polyclonal antibody to SH3GLB2
Purification:	The antibody was purified by immunogen affinity chromatography.

#### Target Details

Target:	SH3GLB2
Alternative Name:	SH3GLB2 ( <a href="#">SH3GLB2 Products</a> )
Background:	KIAA1848, Endophilin-B2, SH3 domain-containing GRB2-like protein B2

## Target Details

Gene ID: 56904, 227700, 311848

UniProt: [Q9NR46](#), [Q8R3V5](#), [Q5PPJ9](#)

## Application Details

Application Notes: WB (1:500 - 1:1000), IH (1:100 - 1:200)

Restrictions: For Research Use only

## Handling

Format: Liquid

Buffer: Liquid in 0.42 % Potassium phosphate, 0.87 % Sodium chloride, pH 7.3, 30 % glycerol, and 0.01 % sodium azide.

Preservative: Sodium azide

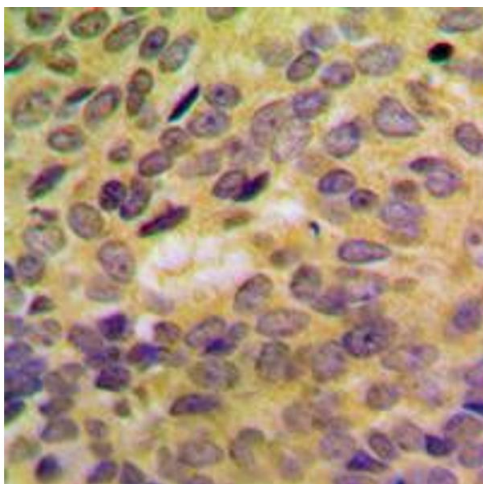
Precaution of Use: This product contains Sodium azide: a POISONOUS AND HAZARDOUS SUBSTANCE which should be handled by trained staff only.

Storage: -20 °C

Storage Comment: Shipped at 4°C. Upon delivery aliquot and store at -20°C for one year. Avoid freeze/thaw cycles.

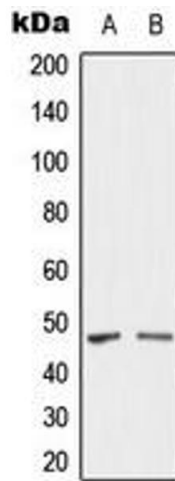
Expiry Date: 12 months

## Images



### Immunohistochemistry

**Image 1.** Immunohistochemical analysis of SH3GLB2 staining in human breast cancer formalin fixed paraffin embedded tissue section. The section was pre-treated using heat mediated antigen retrieval with sodium citrate buffer (pH 6.0). The section was then incubated with the antibody at room temperature and detected using an HRP conjugated compact polymer system. DAB was used as the chromogen. The section was then counterstained with haematoxylin and mounted with DPX.



### Western Blotting

**Image 2.** Western blot analysis of SH3GLB2 expression in U87 (A), HY926 (B) whole cell lysates.