

Datasheet for ABIN7299666
anti-HECW2 antibody (Center)[Go to Product page](#)

2 Images

Overview

Quantity:	100 µL
Target:	HECW2
Binding Specificity:	Center
Reactivity:	Human, Mouse
Host:	Rabbit
Clonality:	Polyclonal
Conjugate:	This HECW2 antibody is un-conjugated
Application:	Western Blotting (WB), Immunofluorescence (IF), Immunochromatography (IC)

Product Details

Immunogen:	KLH-conjugated synthetic peptide encompassing a sequence within the center region of human HECW2.
Specificity:	Recognizes endogenous levels of HECW2 protein.
Characteristics:	Rabbit polyclonal antibody to HECW2
Purification:	The antibody was purified by immunogen affinity chromatography.

Target Details

Target:	HECW2
Alternative Name:	HECW2 (HECW2 Products)
Background:	KIAA1301, NEDL2, E3 ubiquitin-protein ligase HECW2, HECT, C2 and WW domain-containing

Target Details

protein 2, NEDD4-like E3 ubiquitin-protein ligase 2

Gene ID: 57520, 329152

UniProt: [Q9P2P5](#), [Q6I6G8](#)

Application Details

Application Notes: WB (1:500 - 1:1000), IF/IC (1:100 - 1:500)

Restrictions: For Research Use only

Handling

Format: Liquid

Buffer: Liquid in 0.42 % Potassium phosphate, 0.87 % Sodium chloride, pH 7.3, 30 % glycerol, and 0.01 % sodium azide.

Preservative: Sodium azide

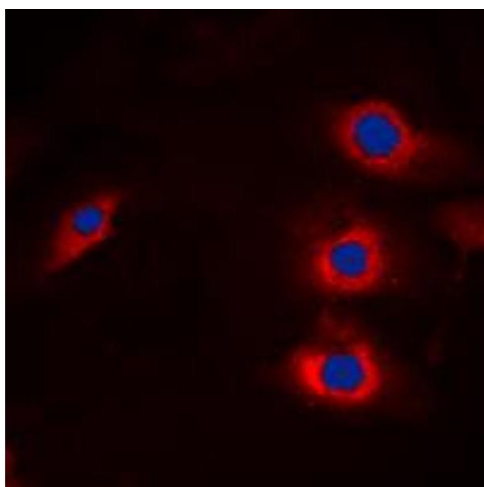
Precaution of Use: This product contains Sodium azide: a POISONOUS AND HAZARDOUS SUBSTANCE which should be handled by trained staff only.

Storage: -20 °C

Storage Comment: Shipped at 4°C. Upon delivery aliquot and store at -20°C for one year. Avoid freeze/thaw cycles.

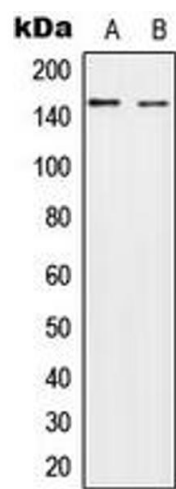
Expiry Date: 12 months

Images



Immunofluorescence

Image 1. Immunofluorescent analysis of HECW2 staining in A549 cells. Formalin-fixed cells were permeabilized with 0.1% Triton X-100 in TBS for 5-10 minutes and blocked with 3% BSA-PBS for 30 minutes at room temperature. Cells were probed with the primary antibody in 3% BSA-PBS and incubated overnight at 4 °C in a humidified chamber. Cells were washed with PBST and incubated with a DyLight 594-conjugated secondary antibody (red) in PBS at room temperature in the dark. DAPI was used to stain the cell



nuclei (blue).

Western Blotting

Image 2. Western blot analysis of HECW2 expression in A549 (A), NIH3T3 (B) whole cell lysates.