

Datasheet for ABIN7299668  
**anti-MARK4 antibody (Center)**[Go to Product page](#)

## 3 Images

## Overview

Quantity:	100 µL
Target:	MARK4
Binding Specificity:	Center
Reactivity:	Human, Mouse, Rat
Host:	Rabbit
Clonality:	Polyclonal
Conjugate:	This MARK4 antibody is un-conjugated
Application:	Western Blotting (WB), Immunohistochemistry (IHC), Immunofluorescence (IF), Immunochromatography (IC)

## Product Details

Immunogen:	KLH-conjugated synthetic peptide encompassing a sequence within the center region of human MARK4.
Specificity:	Recognizes endogenous levels of MARK4 protein.
Characteristics:	Rabbit polyclonal antibody to MARK4
Purification:	The antibody was purified by immunogen affinity chromatography.

## Target Details

Target:	MARK4
Alternative Name:	MARK4 ( <a href="#">MARK4 Products</a> )

Target Details

Background:	KIAA1860, MARKL1, MAP/microtubule affinity-regulating kinase 4, MAP/microtubule affinity-regulating kinase-like 1
Gene ID:	57787, 232944
UniProt:	<a href="#">Q96L34</a> , <a href="#">Q8CIP4</a>

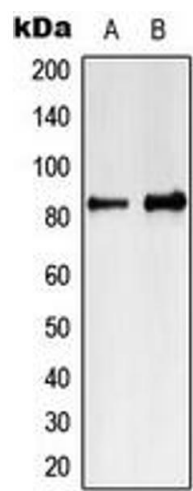
Application Details

Application Notes:	WB (1:500 - 1:1000), IH (1:100 - 1:200), IF/IC (1:100 - 1:500)
Restrictions:	For Research Use only

Handling

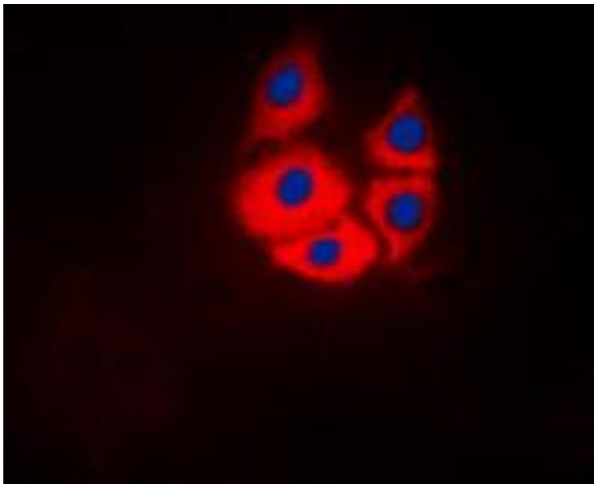
Format:	Liquid
Buffer:	Liquid in 0.42 % Potassium phosphate, 0.87 % Sodium chloride, pH 7.3, 30 % glycerol, and 0.01 % sodium azide.
Preservative:	Sodium azide
Precaution of Use:	This product contains Sodium azide: a POISONOUS AND HAZARDOUS SUBSTANCE which should be handled by trained staff only.
Storage:	-20 °C
Storage Comment:	Shipped at 4°C. Upon delivery aliquot and store at -20°C for one year. Avoid freeze/thaw cycles.
Expiry Date:	12 months

Images



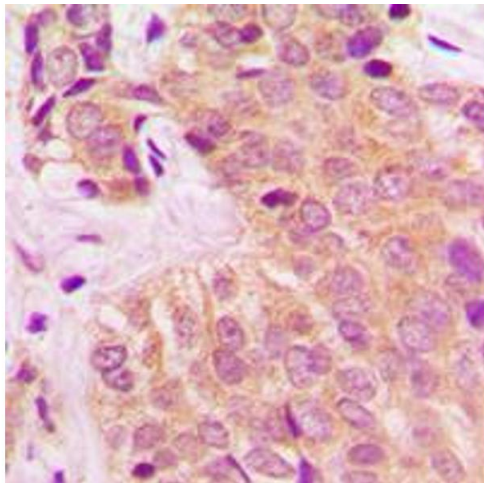
**Western Blotting**

**Image 1.** Western blot analysis of MARK4 expression in Jurkat (A), K562 (B) whole cell lysates.



#### Immunofluorescence

**Image 2.** Immunofluorescent analysis of MARK4 staining in Jurkat cells. Formalin-fixed cells were permeabilized with 0.1% Triton X-100 in TBS for 5-10 minutes and blocked with 3% BSA-PBS for 30 minutes at room temperature. Cells were probed with the primary antibody in 3% BSA-PBS and incubated overnight at 4 °C in a humidified chamber. Cells were washed with PBST and incubated with a DyLight 594-conjugated secondary antibody (red) in PBS at room temperature in the dark. DAPI was used to stain the cell nuclei (blue).



#### Immunohistochemistry

**Image 3.** Immunohistochemical analysis of MARK4 staining in human breast cancer formalin fixed paraffin embedded tissue section. The section was pre-treated using heat mediated antigen retrieval with sodium citrate buffer (pH 6.0). The section was then incubated with the antibody at room temperature and detected using an HRP conjugated compact polymer system. DAB was used as the chromogen. The section was then counterstained with haematoxylin and mounted with DPX.