

Datasheet for ABIN7299674  
**anti-MRPL17 antibody (C-Term)**[Go to Product page](#)

## 2 Images

## Overview

Quantity:	100 µL
Target:	MRPL17
Binding Specificity:	C-Term
Reactivity:	Human, Mouse
Host:	Rabbit
Clonality:	Polyclonal
Conjugate:	This MRPL17 antibody is un-conjugated
Application:	Western Blotting (WB), Immunohistochemistry (IHC)

## Product Details

Immunogen:	KLH-conjugated synthetic peptide encompassing a sequence within the C-term region of human MRPL17.
Specificity:	Recognizes endogenous levels of MRPL17 protein.
Characteristics:	Rabbit polyclonal antibody to MRPL17
Purification:	The antibody was purified by immunogen affinity chromatography.

## Target Details

Target:	MRPL17
Alternative Name:	MRPL17 ( <a href="#">MRPL17 Products</a> )
Background:	LIP2, 39S ribosomal protein L17, mitochondrial, L17mt, MRP-L17, LYST-interacting protein 2

Target Details

Gene ID:	63875, 27397
UniProt:	<a href="#">Q9NRX2</a> , <a href="#">Q9D8P4</a>

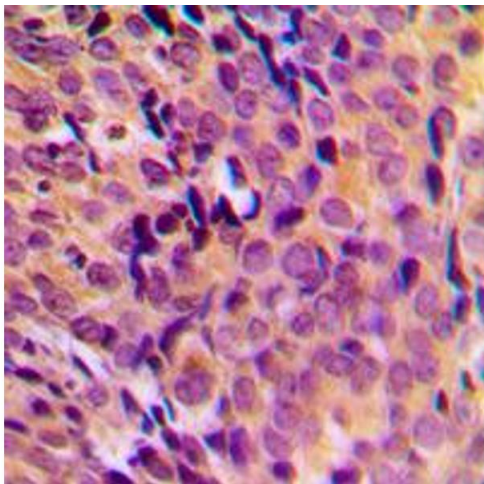
Application Details

Application Notes:	WB (1:500 - 1:1000), IH (1:100 - 1:200)
Restrictions:	For Research Use only

Handling

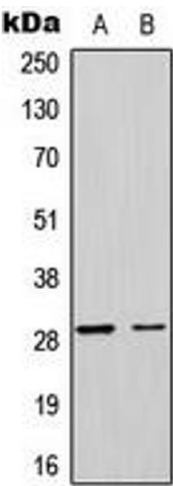
Format:	Liquid
Buffer:	Liquid in 0.42 % Potassium phosphate, 0.87 % Sodium chloride, pH 7.3, 30 % glycerol, and 0.01 % sodium azide.
Preservative:	Sodium azide
Precaution of Use:	This product contains Sodium azide: a POISONOUS AND HAZARDOUS SUBSTANCE which should be handled by trained staff only.
Storage:	-20 °C
Storage Comment:	Shipped at 4°C. Upon delivery aliquot and store at -20°C for one year. Avoid freeze/thaw cycles.
Expiry Date:	12 months

Images



Immunohistochemistry

**Image 1.** Immunohistochemical analysis of MRPL17 staining in human breast cancer formalin fixed paraffin embedded tissue section. The section was pre-treated using heat mediated antigen retrieval with sodium citrate buffer (pH 6.0). The section was then incubated with the antibody at room temperature and detected using an HRP conjugated compact polymer system. DAB was used as the chromogen. The section was then counterstained with haematoxylin and mounted with DPX.



Western Blotting

**Image 2.** Western blot analysis of MRPL17 expression in U251MG (A), HeLa (B) whole cell lysates.